

FTCD rabbit pAb

Cat No.:ES16313

For research use only

Overview

Product Name	FTCD rabbit pAb
Host species	Rabbit
Applications	WB
Species Cross-Reactivity	Human; Mouse;Rat
Recommended dilutions	WB 1: 500-2000
Immunogen	Synthesized peptide derived from human FTCD AA range: 157-207
Specificity	This antibody detects endogenous levels of FTCD at Human/Mouse/Rat
Formulation	Liquid in PBS containing 50% glycerol, 0.5% BSA and 0.02% sodium azide.
Storage	Store at -20°C. Avoid repeated freeze-thaw cycles.
Protein Name	FTCD
Gene Name	FTCD
Cellular localization	Cytoplasm, cytosol . Golgi apparatus . Cytoplasm, cytoskeleton, microtubule organizing center, centrosome, centriole . More abundantly located around the mother centriole. .
Purification	The antibody was affinity-purified from rabbit antiserum by affinity-chromatography using epitope-specific immunogen.
Clonality	Polyclonal
Concentration	1 mg/ml
Observed band	
Human Gene ID	10841
Human Swiss-Prot Number	O95954
Alternative Names	
Background	The protein encoded by this gene is a bifunctional enzyme that channels 1-carbon units from formiminoglutamate, a metabolite of the histidine degradation pathway, to the folate pool. Mutations in this gene are associated with glutamate formiminotransferase deficiency. Alternatively

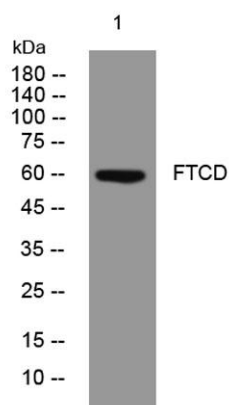




ELK Biotechnology

spliced transcript variants have been found for this gene.[provided by RefSeq, Dec 2009],

Western blot analysis of lysates from Hela cells, primary antibody was diluted at 1:1000, 4°over night



+86-27-59760950

ELKbio@ELKbiotech.com

www.elkbiotech.com

23-2, No.388 Gaoxin 2nd Road,Wuhan East Lake Hi-tech Development Zone, Hubei , P.R.C