

# SYNJ2 rabbit pAb

Cat No.:ES12859

For research use only

## Overview

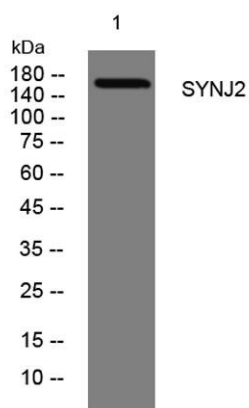
Product Name	SYNJ2 rabbit pAb
Host species	Rabbit
Applications	WB
Species Cross-Reactivity	Human; Mouse;Rat
Recommended dilutions	WB 1: 500-2000
Immunogen	Synthesized peptide derived from human SYNJ2 AA range: 145-195
Specificity	This antibody detects endogenous levels of SYNJ2 at Human/Mouse/Rat
Formulation	Liquid in PBS containing 50% glycerol, 0.5% BSA and 0.02% sodium azide.
Storage	Store at -20°C. Avoid repeated freeze-thaw cycles.
Protein Name	SYNJ2
Gene Name	SYNJ2 KIAA0348
Cellular localization	Cytoplasm . Cell membrane . Membrane raft . Cell junction, synapse, presynapse . Cytoplasm, cytoskeleton . Localizes at presynapse terminals in brain and at bundles of microtubules surrounding the nucleus in the elongating spermatids corresponding to the
Purification	The antibody was affinity-purified from rabbit antiserum by affinity-chromatography using epitope-specific immunogen.
Clonality	Polyclonal
Concentration	1 mg/ml
Observed band	
Human Gene ID	8871
Human Swiss-Prot Number	O15056
Alternative Names	
Background	The gene is a member of the inositol-polyphosphate 5-phosphatase family. The encoded protein interacts with the ras-related C3 botulinum toxin substrate 1, which causes translocation of the encoded protein





**ELK Biotechnology**

to the plasma membrane where it inhibits clathrin-mediated endocytosis. Alternative splicing results in multiple transcript variants. [provided by RefSeq, May 2010],



Western blot analysis of lysates from 293T cells, primary antibody was diluted at 1:1000, 4° over night



+86-27-59760950

[ELKbio@ELKbiotech.com](mailto:ELKbio@ELKbiotech.com)

[www.elkbiotech.com](http://www.elkbiotech.com)

23-2, No.388 Gaoxin 2nd Road, Wuhan East Lake Hi-tech Development Zone, Hubei, P.R.C.