

MMP8 (Cleaved-Leu101) rabbit pAb

Cat No.:ES20030

For research use only

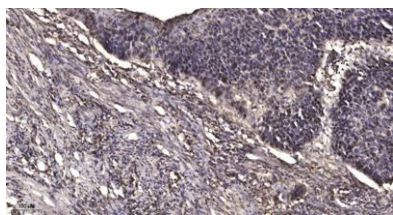
Overview

Product Name	MMP8 (Cleaved-Leu101) rabbit pAb
Host species	Rabbit
Applications	WB;IHC
Species Cross-Reactivity	Human;Mouse;Rat
Recommended dilutions	WB 1:500-2000;IHC-p 1:50-300
Immunogen	Synthesized peptide derived from human MMP8 (Cleaved-Leu101)
Specificity	This antibody detects endogenous levels of Human,Mouse,Rat MMP8 (Cleaved-Leu101, protein was cleaved amino acid sequence between 100-101)
Formulation	Liquid in PBS containing 50% glycerol, 0.5% BSA and 0.02% sodium azide.
Storage	Store at -20°C. Avoid repeated freeze-thaw cycles.
Protein Name	MMP8 (Cleaved-Leu101)
Gene Name	MMP8 CLG1
Cellular localization	Cytoplasmic granule. Secreted, extracellular space, extracellular matrix . Stored in intracellular granules.
Purification	The antibody was affinity-purified from rabbit antiserum by affinity-chromatography using epitope-specific immunogen.
Clonality	Polyclonal
Concentration	1 mg/ml
Observed band	40 53kD
Human Gene ID	4317
Human Swiss-Prot Number	P22894
Alternative Names	Neutrophil collagenase (EC 3.4.24.34;Matrix metalloproteinase-8;MMP-8;PMNL collagenase;PMNL-CL)
Background	catalytic activity:Cleavage of interstitial collagens in the triple helical domain. Unlike EC 3.4.24.7, this enzyme cleaves type III collagen more slowly than type I.,cofactor:Binds 2 zinc ions per





subunit.,cofactor: Binds 3 calcium ions per subunit.,domain: The conserved cysteine present in the cysteine-switch motif binds the catalytic zinc ion, thus inhibiting the enzyme. The dissociation of the cysteine from the zinc ion upon the activation-peptide release activates the enzyme.,enzyme regulation: Cannot be activated without removal of the activation peptide.,function: Can degrade fibrillar type I, II, and III collagens.,similarity: Belongs to the peptidase M10A family.,similarity: Contains 4 hemopexin-like domains.,subcellular location: Stored in intracellular granules.,tissue specificity: Neutrophils.,



Immunohistochemical analysis of paraffin-embedded human Squamous cell carcinoma of lung. 1, Antibody was diluted at 1:200(4° overnight). 2, Tris-EDTA,pH9.0 was used for antigen retrieval. 3,Secondary antibody was diluted at 1:200(room temperature, 45min).

