

SYAP1 rabbit pAb

Cat No.:ES12870

For research use only

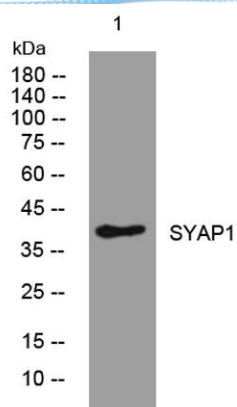
Overview

Product Name	SYAP1 rabbit pAb
Host species	Rabbit
Applications	WB
Species Cross-Reactivity	Human; Mouse
Recommended dilutions	WB 1:500-2000
Immunogen	Synthesized peptide derived from human SYAP1 AA range: 183-233
Specificity	This antibody detects endogenous levels of SYAP1 at Human/Mouse
Formulation	Liquid in PBS containing 50% glycerol, 0.5% BSA and 0.02% sodium azide.
Storage	Store at -20°C. Avoid repeated freeze-thaw cycles.
Protein Name	SYAP1
Gene Name	SYAP1 PRO3113
Cellular localization	Cytoplasm, perinuclear region . Golgi apparatus . Perikaryon . Cell projection, axon . Cell projection, dendrite . Cell projection, growth cone . Cell junction, synapse, presynaptic cell membrane . Cell junction, synapse, postsynaptic cell membrane . Memb
Purification	The antibody was affinity-purified from rabbit antiserum by affinity-chromatography using epitope-specific immunogen.
Clonality	Polyclonal
Concentration	1 mg/ml
Observed band	38kD
Human Gene ID	94056
Human Swiss-Prot Number	Q96A49
Alternative Names	Synapse-associated protein 1
Background	





ELK Biotechnology



Western blot analysis of lysates from DU145 cells, primary antibody was diluted at 1:1000, 4° over night



+86-27-59760950

ELKbio@ELKbiotech.com

www.elkbiotech.com

23-2, No.388 Gaoxin 2nd Road, Wuhan East Lake Hi-tech Development Zone, Hubei, P.R.C.