

# Aurora A Rabbit pAb

Cat No.:ES20863

For research use only

## Overview

|                          |   |
|--------------------------|---|
| Product Name             | Aurora A Rabbit pAb   |
| Host species             | Rabbit  |
| Applications             | IHC;WB  |
| Species Cross-Reactivity | Human; Mouse;Rat  |
| Recommended dilutions    | IHC-p1:50-200 ,WB 1:1000-2000   |
| Immunogen                | Synthesized peptide derived from human Aurora A<br>AA range: 65-115   |
| Specificity              | This antibody detects endogenous levels of Aurora A at Human, Mouse,Rat   |
| Formulation              | Liquid in PBS containing 50% glycerol, 0.5% BSA and 0.02% sodium azide.   |
| Storage                  | Store at -20°C. Avoid repeated freeze-thaw cycles.  |
| Protein Name             | Aurora A  |
| Gene Name                | AURKA AIK AIRK1 ARK1 AURA AYK1 BTAK IAK1 STK15 STK6   |
| Cellular localization    | Cytoplasm, cytoskeleton, microtubule organizing center, centrosome . Cytoplasm, cytoskeleton, spindle pole . Cytoplasm, cytoskeleton, cilium basal body . Cytoplasm, cytoskeleton, microtubule organizing center, centrosome, centriole . Cell projection, neur |
| Purification             | The antibody was affinity-purified from rabbit antiserum by affinity-chromatography using epitope-specific immunogen.   |
| Clonality                | Polyclonal  |
| Concentration            | 1 mg/ml   |
| Observed band            | 46kD  |
| Human Gene ID            | 6790  |
| Human Swiss-Prot Number  | O14965  |
| Alternative Names        | Aurora kinase A (EC 2.7.11.1) (Aurora 2) (Aurora/IPL1-related kinase 1) (ARK-1) (Aurora-related kinase 1) (hARK1) (Breast tumor-amplified kinase) (Serine/threonine-protein   |

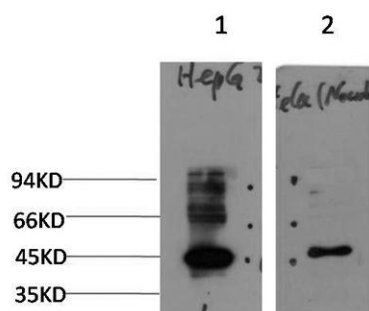




## Background

kinase 15) (Serine/threonine-protein kinase 6) (Serine/threonine-protein kinase aur Aurora A(AURKA) Homo sapiens The protein encoded by this gene is a cell cycle-regulated kinase that appears to be involved in microtubule formation and/or stabilization at the spindle pole during chromosome segregation. The encoded protein is found at the centrosome in interphase cells and at the spindle poles in mitosis. This gene may play a role in tumor development and progression. A processed pseudogene of this gene has been found on chromosome 1, and an unprocessed pseudogene has been found on chromosome 10. Multiple transcript variants encoding the same protein have been found for this gene.

Western blot analysis of 1)HepG2 Cell, 2) HeLa Cells treated with Nocodazole using Rabbit pAb diluted at 1:2,000.



Immunohistochemical analysis of paraffin-embedded human Squamous cell carcinoma of lung. 1, Antibody was diluted at 1:200(4° overnight). 2, Tris-EDTA,pH9.0 was used for antigen retrieval. 3,Secondary antibody was diluted at 1:200(room temperature, 45min).

