

TMTC2 rabbit pAb

Cat No.:ES12628

For research use only

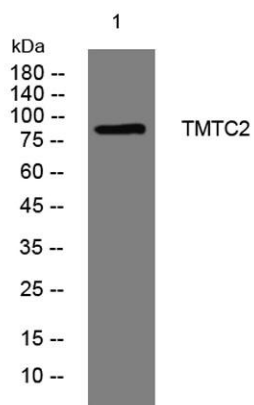
Overview

Product Name	TMTC2 rabbit pAb
Host species	Rabbit
Applications	WB
Species Cross-Reactivity	Human; Mouse
Recommended dilutions	WB 1: 500-2000
Immunogen	Synthesized peptide derived from human TMTC2 AA range: 184-234
Specificity	This antibody detects endogenous levels of TMTC2 at Human/Mouse
Formulation	Liquid in PBS containing 50% glycerol, 0.5% BSA and 0.02% sodium azide.
Storage	Store at -20°C. Avoid repeated freeze-thaw cycles.
Protein Name	TMTC2
Gene Name	TMTC2
Cellular localization	Membrane ; Multi-pass membrane protein . Endoplasmic reticulum .
Purification	The antibody was affinity-purified from rabbit antiserum by affinity-chromatography using epitope-specific immunogen.
Clonality	Polyclonal
Concentration	1 mg/ml
Observed band	
Human Gene ID	160335
Human Swiss-Prot Number	Q8N394
Alternative Names	
Background	The protein encoded by this gene is an integral membrane protein localized to the endoplasmic reticulum (ER). The encoded protein contains many tetratricopeptide repeats, sequences known for being involved in protein-protein interactions. This protein binds both the calcium uptake pump SERCA2B and the carbohydrate-binding chaperone calnexin, and it appears to play a role in calcium





homeostasis in the ER. Multiple transcript variants encoding different isoforms have been found for this gene. [provided by RefSeq, Feb 2016],



Western blot analysis of lysates from THP-1 cells, primary antibody was diluted at 1:1000, 4°over night

