

NCK5L rabbit pAb

Cat No.:ES14542

For research use only

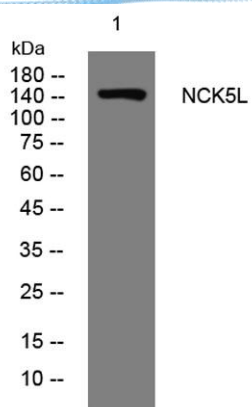
Overview

Product Name	NCK5L rabbit pAb
Host species	Rabbit
Applications	WB
Species Cross-Reactivity	Human; Mouse
Recommended dilutions	WB 1: 500-2000
Immunogen	Synthesized peptide derived from human NCK5L AA range: 261-311
Specificity	This antibody detects endogenous levels of NCK5L at Human/Mouse
Formulation	Liquid in PBS containing 50% glycerol, 0.5% BSA and 0.02% sodium azide.
Storage	Store at -20°C. Avoid repeated freeze-thaw cycles.
Protein Name	NCK5L
Gene Name	NCKAP5L KIAA1602 FP1193
Cellular localization	Cytoplasm, cytoskeleton, microtubule organizing center, centrosome . Localizes to microtubule plus ends (PubMed:26485573, PubMed:26482847). Associates with centrosomes during interphase, but dissociates from these structures from the onset of mitosis (Pub
Purification	The antibody was affinity-purified from rabbit antiserum by affinity-chromatography using epitope-specific immunogen.
Clonality	Polyclonal
Concentration	1 mg/ml
Observed band	
Human Gene ID	57701
Human Swiss-Prot Number	Q9HCHO
Alternative Names	
Background	





ELK Biotechnology



Western blot analysis of lysates from MCF-7 cells, primary antibody was diluted at 1:1000, 4° over night



+86-27-59760950

ELKbio@ELKbiotech.com

www.elkbiotech.com

23-2, No.388 Gaoxin 2nd Road, Wuhan East Lake Hi-tech Development Zone, Hubei, P.R.C.