

MMP26 (Cleaved-Thr90) rabbit pAb

Cat No.:ES20027

For research use only

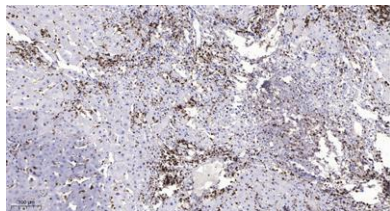
Overview

Product Name	MMP26 (Cleaved-Thr90) rabbit pAb
Host species	Rabbit
Applications	WB;ELISA;IHC
Species Cross-Reactivity	Human;Rat;Mouse;
Recommended dilutions	WB 1:500-2000;IHC-p 1:50-300; ELISA 2000-20000
Immunogen	Synthesized peptide derived from human MMP26 (Cleaved-Thr90)
Specificity	This antibody detects endogenous levels of Human MMP26 (Cleaved-Thr90, protein was cleaved amino acid sequence between 89-90)
Formulation	Liquid in PBS containing 50% glycerol, 0.5% BSA and 0.02% sodium azide.
Storage	Store at -20°C. Avoid repeated freeze-thaw cycles.
Protein Name	MMP26 (Cleaved-Thr90)
Gene Name	MMP26
Cellular localization	Secreted, extracellular space, extracellular matrix.
Purification	The antibody was affinity-purified from rabbit antiserum by affinity-chromatography using epitope-specific immunogen.
Clonality	Polyclonal
Concentration	1 mg/ml
Observed band	17 25kD
Human Gene ID	56547
Human Swiss-Prot Number	Q9NRE1
Alternative Names	Matrix metalloproteinase-26 (MMP-26;EC 3.4.24.-;Endometase;Matrilysin-2)
Background	





ELK Biotechnology



Immunohistochemical analysis of paraffin-embedded human liver cancer. 1, Antibody was diluted at 1:200(4° overnight). 2, Tris-EDTA,pH9.0 was used for antigen retrieval. 3,Secondary antibody was diluted at 1:200(room temperature, 45min).



+86-27-59760950

ELKbio@ELKbiotech.com

www.elkbiotech.com

23-2, No.388 Gaoxin 2nd Road,Wuhan East Lake Hi-tech Development Zone, Hubei , P.R.C