

# BEST2 rabbit pAb

Cat No.:ES20818

For research use only

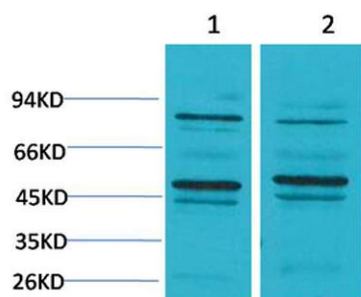
## Overview

|                          |  |
|--------------------------|--|
| Product Name             | BEST2 rabbit pAb   |
| Host species             | Rabbit   |
| Applications             | WB;IHC;IF  |
| Species Cross-Reactivity | Mouse;Rat  |
| Recommended dilutions    | WB: 1:500-1000 IHC: 1:200-500  |
| Immunogen                | Synthetic Peptide of BEST2   |
| Specificity              | The antibody detects endogenous BEST2 protein.   |
| Formulation              | Liquid in PBS containing 50% glycerol, 0.5% BSA and 0.02% sodium azide.  |
| Storage                  | Store at -20°C. Avoid repeated freeze-thaw cycles.   |
| Protein Name             | Bestrophin-2   |
| Gene Name                | BEST2  |
| Cellular localization    | Cell membrane; Multi-pass membrane protein.  |
| Purification             | The antibody was affinity-purified from rabbit antiserum by affinity-chromatography using epitope-specific immunogen.  |
| Clonality                | Polyclonal   |
| Concentration            |  |
| Observed band            | 50kD   |
| Human Gene ID            | 54831  |
| Human Swiss-Prot Number  | Q8NFU1   |
| Alternative Names        | Bestrophin-2; Vitelliform macular dystrophy 2-like protein 1   |
| Background               | This gene is a member of the bestrophin gene family of anion channels. Bestrophin genes share a similar gene structure with highly conserved exon-intron boundaries, but with distinct 3' ends. Bestrophins are transmembrane proteins that contain a homologous region rich in aromatic residues, including an invariant arg-phe-pro motif. Mutation in one of the family members (bestrophin 1) is associated with vitelliform macular dystrophy. The bestrophin 2 gene is mainly expressed in the retinal |



pigment epithelium and colon. [provided by RefSeq, Jul 2008],

Western blot analysis of 1) Mouse Brain Tissue, 2) Rat Brain Tissue using BEST2 Polyclonal Antibody. Secondary antibody(catalog#:RS0002) was diluted at 1:20000



Immunohistochemical analysis of paraffin-embedded Rat Brain Tissue using BEST2 Polyclonal Antibody.

