

MERIT40 (phospho-Ser29) rabbit pAb

Cat No.:ES14973

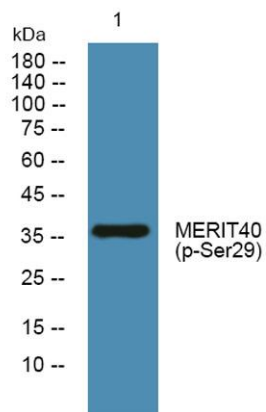
For research use only

Overview

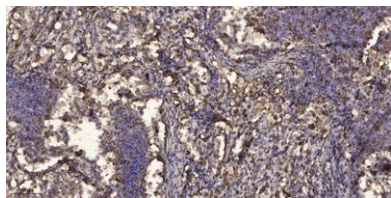
Product Name	MERIT40 (phospho-Ser29) rabbit pAb
Host species	Rabbit
Applications	WB;IHC
Species Cross-Reactivity	Human;Rat;Mouse;
Recommended dilutions	WB 1:500-2000;IHC-p 1:50-300
Immunogen	Synthesized phospho peptide around human MERIT40 (Ser29)
Specificity	This antibody detects endogenous levels of Human MERIT40 (phospho-Ser29)
Formulation	Liquid in PBS containing 50% glycerol, 0.5% BSA and 0.02% sodium azide.
Storage	Store at -20°C. Avoid repeated freeze-thaw cycles.
Protein Name	MERIT40 (Ser29)
Gene Name	BABAM1 C19orf62 MERIT40 NBA1 HSPC142
Cellular localization	Cytoplasm . Nucleus . Localizes at sites of DNA damage at double-strand breaks (DSBs). .
Purification	The antibody was affinity-purified from rabbit antiserum by affinity-chromatography using epitope-specific immunogen.
Clonality	Polyclonal
Concentration	1 mg/ml
Observed band	36kD
Human Gene ID	29086
Human Swiss-Prot Number	Q9NWX8
Alternative Names	BRISC and BRCA1-A complex member 1 (Mediator of RAP80 interactions and targeting subunit of 40 kDa) (New component of the BRCA1-A complex)

Background





Western blot analysis of lysates from SH-SY5Y cells, primary antibody was diluted at 1:1000, 4° over night



Immunohistochemical analysis of paraffin-embedded human Squamous cell carcinoma of lung. 1, Antibody was diluted at 1:200(4° overnight). 2, Tris-EDTA,pH9.0 was used for antigen retrieval. 3,Secondary antibody was diluted at 1:200(room temperature, 45min).

