

DISC1 rabbit pAb

Cat No.:ES16941

For research use only

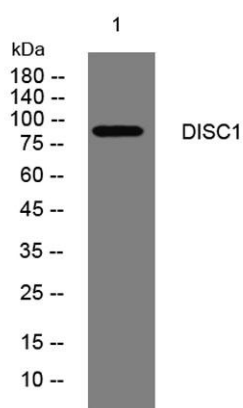
Overview

Product Name	DISC1 rabbit pAb
Host species	Rabbit
Applications	WB
Species Cross-Reactivity	Human; Mouse;Rat
Recommended dilutions	WB 1: 500-2000
Immunogen	Synthesized peptide derived from human DISC1 AA range: 423-473
Specificity	This antibody detects endogenous levels of DISC1 at Human/Mouse/Rat
Formulation	Liquid in PBS containing 50% glycerol, 0.5% BSA and 0.02% sodium azide.
Storage	Store at -20°C. Avoid repeated freeze-thaw cycles.
Protein Name	DISC1
Gene Name	DISC1 KIAA0457
Cellular localization	Cytoplasm . Cytoplasm, cytoskeleton . Mitochondrion . Cytoplasm, cytoskeleton, microtubule organizing center, centrosome . Cell junction, synapse, postsynaptic density . Colocalizes with NDEL1 in the perinuclear region and the centrosome (By similarity).
Purification	The antibody was affinity-purified from rabbit antiserum by affinity-chromatography using epitope-specific immunogen.
Clonality	Polyclonal
Concentration	1 mg/ml
Observed band	
Human Gene ID	27185
Human Swiss-Prot Number	Q9NRI5
Alternative Names	
Background	This gene encodes a protein with multiple coiled coil motifs which is located in the nucleus, cytoplasm and mitochondria. The protein is involved in neurite outgrowth and cortical development through its





interaction with other proteins. This gene is disrupted in a t(1;11)(q42.1;q14.3) translocation which segregates with schizophrenia and related psychiatric disorders in a large Scottish family. Alternate transcriptional splice variants, encoding different isoforms, have been characterized. [provided by RefSeq, Jul 2008],



Western blot analysis of lysates from HCT116 cells, primary antibody was diluted at 1:1000, 4° over night

