

# NEPR1 rabbit pAb

Cat No.:ES14525

For research use only

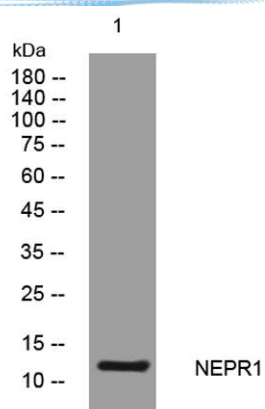
## Overview

Product Name	NEPR1 rabbit pAb
Host species	Rabbit
Applications	WB
Species Cross-Reactivity	Human; Mouse
Recommended dilutions	WB 1: 500-2000
Immunogen	Synthesized peptide derived from human NEPR1 AA range: 25-75
Specificity	This antibody detects endogenous levels of NEPR1 at Human/Mouse
Formulation	Liquid in PBS containing 50% glycerol, 0.5% BSA and 0.02% sodium azide.
Storage	Store at -20°C. Avoid repeated freeze-thaw cycles.
Protein Name	NEPR1
Gene Name	CNEP1R1 C16orf69 TMEM188
Cellular localization	Nucleus membrane ; Multi-pass membrane protein . Cytoplasm . Filamentous pattern in the cytoplasm.
Purification	The antibody was affinity-purified from rabbit antiserum by affinity-chromatography using epitope-specific immunogen.
Clonality	Polyclonal
Concentration	1 mg/ml
Observed band	
Human Gene ID	255919
Human Swiss-Prot Number	Q8N9A8
Alternative Names	
Background	This gene encodes a transmembrane protein that belongs to the Tmem18A family. A similar protein in yeast is a component of an endoplasmic reticulum-associated protein phosphatase complex and is thought to play a role in the synthesis of triacylglycerol. Alternate splicing results in multiple transcript variants. [provided by RefSeq, Aug 2013],





**ELK Biotechnology**



Western blot analysis of lysates from A549 cells, primary antibody was diluted at 1:1000, 4° over night



+86-27-59760950

ELKbio@ELKbiotech.com

[www.elkbiotech.com](http://www.elkbiotech.com)

23-2, No.388 Gaoxin 2nd Road, Wuhan East Lake Hi-tech Development Zone, Hubei, P.R.C.