

NMRL1 rabbit pAb

Cat No.:ES14475

For research use only

Overview

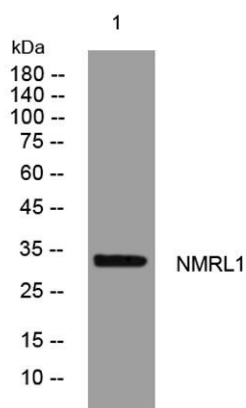
Product Name	NMRL1 rabbit pAb
Host species	Rabbit
Applications	WB
Species Cross-Reactivity	Human; Mouse;Rat
Recommended dilutions	WB 1: 500-2000
Immunogen	Synthesized peptide derived from human NMRL1 AA range: 179-229
Specificity	This antibody detects endogenous levels of NMRL1 at Human/Mouse/Rat
Formulation	Liquid in PBS containing 50% glycerol, 0.5% BSA and 0.02% sodium azide.
Storage	Store at -20°C. Avoid repeated freeze-thaw cycles.
Protein Name	NMRL1
Gene Name	NMRAL1 HSCARG
Cellular localization	Cytoplasm. Cytoplasm, perinuclear region. Nucleus. Under normal redox growth conditions localizes in the cytoplasm and perinuclear region. Nuclear localization is promoted by increased intracellular nitric oxide and reduced NADPH/NADP(+) ratios.
Purification	The antibody was affinity-purified from rabbit antiserum by affinity-chromatography using epitope-specific immunogen.
Clonality	Polyclonal
Concentration	1 mg/ml
Observed band	
Human Gene ID	57407
Human Swiss-Prot Number	Q9HBL8
Alternative Names	
Background	This gene encodes an NADPH sensor protein that preferentially binds to NADPH. The encoded protein also negatively regulates the activity of NF-kappaB in a ubiquitylation-dependent manner. It plays a key role in cellular antiviral response by negatively





ELK Biotechnology

regulating the interferon response factor
3-mediated expression of interferon beta.
Alternative splicing of this gene results in multiple
transcript variants. [provided by RefSeq, Feb 2015],



Western blot analysis of lysates from MDA-MB cells,
primary antibody was diluted at 1:1000, 4° over night



+86-27-59760950

ELKbio@ELKbiotech.com

www.elkbiotech.com

23-2, No.388 Gaoxin 2nd Road, Wuhan East Lake Hi-tech Development Zone, Hubei, P.R.C.