



IGF-I Receptor β (phospho-Tyr980) rabbit pAb

Cat No.:ES15513

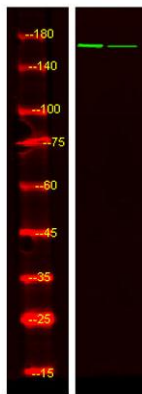
For research use only

Overview

Product Name	IGF-I Receptor β (phospho-Tyr980) rabbit pAb
Host species	Rabbit
Applications	WB
Species Cross-Reactivity	Human;Mouse;Rat
Recommended dilutions	WB 1:1000-2000
Immunogen	Synthesized phospho peptide around human IGF-I Receptor β (Tyr980)
Specificity	This antibody detects endogenous levels of Human Mouse Rat IGF-I Receptor β (phospho-Tyr980)
Formulation	Liquid in PBS containing 50% glycerol, 0.5% BSA and 0.02% sodium azide.
Storage	Store at -20°C. Avoid repeated freeze-thaw cycles.
Protein Name	IGF-I Receptor β (Tyr980)
Gene Name	IGF1R
Cellular localization	Cell membrane ; Single-pass type I membrane protein .
Purification	The antibody was affinity-purified from rabbit antiserum by affinity-chromatography using epitope-specific immunogen.
Clonality	Polyclonal
Concentration	1 mg/ml
Observed band	pro: 155kD, recetor beta: 95kD
Human Gene ID	3480
Human Swiss-Prot Number	P08069
Alternative Names	Insulin-like growth factor 1 receptor (EC 2.7.10.1) (Insulin-like growth factor I receptor) (IGF-I receptor) (CD antigen CD221) [Cleaved into: Insulin-like growth factor 1 receptor alpha chain; Insulin-like growth factor 1 receptor beta chain]
Background	This receptor binds insulin-like growth factor with a high affinity. It has tyrosine kinase activity. The



insulin-like growth factor I receptor plays a critical role in transformation events. Cleavage of the precursor generates alpha and beta subunits. It is highly overexpressed in most malignant tissues where it functions as an anti-apoptotic agent by enhancing cell survival. Alternatively spliced transcript variants encoding distinct isoforms have been found for this gene. [provided by RefSeq, May 2014],



Western Blot analysis of HeLa treated or untreated by LPS lysis, using primary antibody at 1:1000 dilution. Secondary antibody(catalog#:RS23920) was diluted at 1:10000

