

KNTC1 rabbit pAb

Cat No.:ES15273

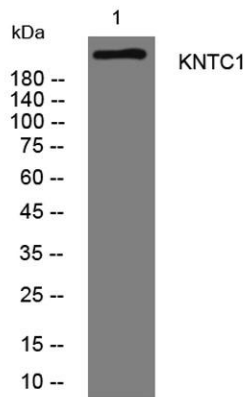
For research use only

Overview

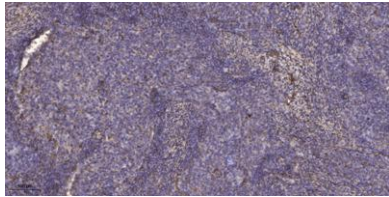
Product Name	KNTC1 rabbit pAb
Host species	Rabbit
Applications	WB;ELISA;IHC
Species Cross-Reactivity	Human; Mouse
Recommended dilutions	WB 1:500-2000;IHC-p 1:50-300; ELISA 2000-20000
Immunogen	Synthesized peptide derived from human KNTC1 AA range: 1343-1393
Specificity	This antibody detects endogenous levels of KNTC1 at Human/Mouse
Formulation	Liquid in PBS containing 50% glycerol, 0.5% BSA and 0.02% sodium azide.
Storage	Store at -20°C. Avoid repeated freeze-thaw cycles.
Protein Name	KNTC1
Gene Name	KNTC1 KIAA0166
Cellular localization	Cytoplasm. Nucleus. Chromosome, centromere, kinetochore. Cytoplasm, cytoskeleton, spindle. Dynamic pattern of localization during the cell cycle. At interphase, uniformly distributed throughout the cytoplasm and nucleus. By prophase and until late stages
Purification	The antibody was affinity-purified from rabbit antiserum by affinity-chromatography using epitope-specific immunogen.
Clonality	Polyclonal
Concentration	1 mg/ml
Observed band	
Human Gene ID	9735
Human Swiss-Prot Number	P50748
Alternative Names	
Background	This gene encodes a protein that is one of many involved in mechanisms to ensure proper chromosome segregation during cell division. Experimental evidence indicated that the encoded



protein functioned in a similar manner to that of the *Drosophila* rough deal protein. [provided by RefSeq, Jul 2008],



Western blot analysis of lysates from MCF-7 cells, primary antibody was diluted at 1:1000, 4° over night



Immunohistochemical analysis of paraffin-embedded human cervical carcinoma. 1, Antibody was diluted at 1:200(4° overnight). 2, Tris-EDTA, pH9.0 was used for antigen retrieval. 3, Secondary antibody was diluted at 1:200(room temperature, 45min).

