

# SAMD5 rabbit pAb

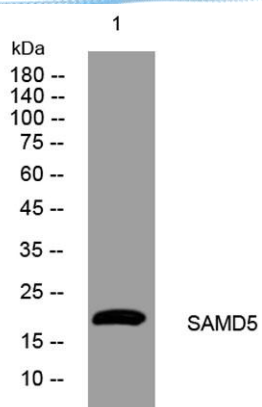
Cat No.:ES13205

For research use only

## Overview

Product Name	SAMD5 rabbit pAb
Host species	Rabbit
Applications	WB
Species Cross-Reactivity	Human; Mouse
Recommended dilutions	WB 1: 500-2000
Immunogen	Synthesized peptide derived from human SAMD5 AA range: 66-116
Specificity	This antibody detects endogenous levels of SAMD5 at Human/Mouse
Formulation	Liquid in PBS containing 50% glycerol, 0.5% BSA and 0.02% sodium azide.
Storage	Store at -20°C. Avoid repeated freeze-thaw cycles.
Protein Name	SAMD5
Gene Name	SAMD5 SAMDC1
Cellular localization	Cytoplasm .
Purification	The antibody was affinity-purified from rabbit antiserum by affinity-chromatography using epitope-specific immunogen.
Clonality	Polyclonal
Concentration	1 mg/ml
Observed band	
Human Gene ID	389432
Human Swiss-Prot Number	Q5TGI4
Alternative Names	
Background	





Western blot analysis of lysates from VEC cells, primary antibody was diluted at 1:1000, 4° over night

