

# ITM2C rabbit pAb

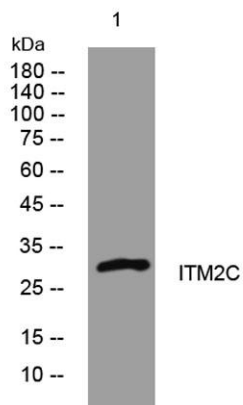
Cat No.:ES15409

For research use only

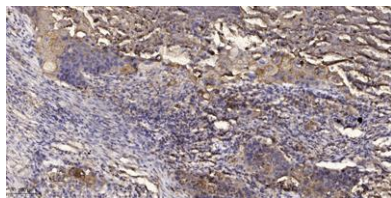
## Overview

Product Name	ITM2C rabbit pAb
Host species	Rabbit
Applications	WB;IHC
Species Cross-Reactivity	Human; Mouse;Rat
Recommended dilutions	WB 1:500-2000;IHC-p 1:50-300
Immunogen	Synthesized peptide derived from human ITM2C AA range: 1-51
Specificity	This antibody detects endogenous levels of ITM2C at Human/Mouse/Rat
Formulation	Liquid in PBS containing 50% glycerol, 0.5% BSA and 0.02% sodium azide.
Storage	Store at -20°C. Avoid repeated freeze-thaw cycles.
Protein Name	ITM2C
Gene Name	ITM2C BRI3 hucep-14 NPD018 PSEC0047
Cellular localization	Lysosome membrane ; Single-pass type II membrane protein . Cell membrane ; Single-pass type II membrane protein .
Purification	The antibody was affinity-purified from rabbit antiserum by affinity-chromatography using epitope-specific immunogen.
Clonality	Polyclonal
Concentration	1 mg/ml
Observed band	
Human Gene ID	81618
Human Swiss-Prot Number	Q9NQX7
Alternative Names	
Background	





Western blot analysis of lysates from MDA-MB cells, primary antibody was diluted at 1:1000, 4° over night



Immunohistochemical analysis of paraffin-embedded human Squamous cell carcinoma of lung. 1, Antibody was diluted at 1:200(4° overnight). 2, Tris-EDTA,pH9.0 was used for antigen retrieval. 3,Secondary antibody was diluted at 1:200(room temperature, 45min).

