

ROS1 (phospho-Tyr2274) rabbit pAb

Cat No.:ES13349

For research use only

Overview

Product Name	ROS1 (phospho-Tyr2274) rabbit pAb
Host species	Rabbit
Applications	WB;IF
Species Cross-Reactivity	Human;Rat;Mouse;
Recommended dilutions	WB 1:1000-2000
Immunogen	Synthesized phospho peptide around human ROS1 (Tyr2274)
Specificity	This antibody detects endogenous levels of Human ROS1 (phospho-Tyr2274)
Formulation	Liquid in PBS containing 50% glycerol, 0.5% BSA and 0.02% sodium azide.
Storage	Store at -20°C. Avoid repeated freeze-thaw cycles.
Protein Name	ROS1 (Tyr2274)
Gene Name	ROS1 MCF3 ROS
Cellular localization	Cell membrane ; Single-pass type I membrane protein .
Purification	The antibody was affinity-purified from rabbit antiserum by affinity-chromatography using epitope-specific immunogen.
Clonality	Polyclonal
Concentration	1 mg/ml
Observed band	258kD
Human Gene ID	6098
Human Swiss-Prot Number	P08922
Alternative Names	Proto-oncogene tyrosine-protein kinase ROS (EC 2.7.10.1) (Proto-oncogene c-Ros) (Proto-oncogene c-Ros-1) (Receptor tyrosine kinase c-ros oncogene 1) (c-Ros receptor tyrosine kinase)
Background	This proto-oncogene, highly-expressed in a variety of tumor cell lines, belongs to the sevenless subfamily of tyrosine kinase insulin receptor genes. The protein encoded by this gene is a type I integral membrane protein with tyrosine kinase activity. The

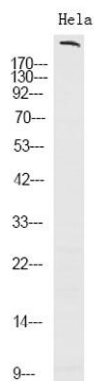




ELK Biotechnology

protein may function as a growth or differentiation factor receptor. [provided by RefSeq, Jul 2008],

Western Blot analysis of Hela using primary antibody at 1:1000 dilution 4°C, overnight. Secondary antibody(catalog#:RS23920) was diluted at 1:10000 25°C, 1.5hours



+86-27-59760950

ELKbio@ELKbiotech.com

www.elkbiotech.com

23-2, No.388 Gaoxin 2nd Road,Wuhan East Lake Hi-tech Development Zone, Hubei , P.R.C