

RPA32/RPA2 (phospho-Ser8) rabbit pAb

Cat No.:ES13345

For research use only

Overview

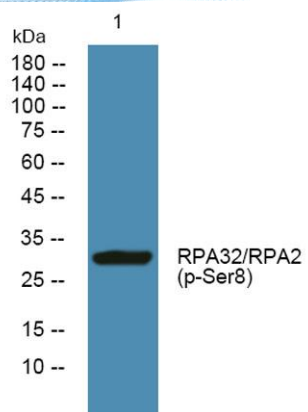
Product Name	RPA32/RPA2 (phospho-Ser8) rabbit pAb
Host species	Rabbit
Applications	WB
Species Cross-Reactivity	Human;Rat;Mouse;
Recommended dilutions	WB 1:1000-2000
Immunogen	Synthesized phospho peptide around human RPA32 and RPA2 (Ser8)
Specificity	This antibody detects endogenous levels of Human RPA32 or RPA2 (phospho-Ser8)
Formulation	Liquid in PBS containing 50% glycerol, 0.5% BSA and 0.02% sodium azide.
Storage	Store at -20°C. Avoid repeated freeze-thaw cycles.
Protein Name	RPA32/RPA2 (Ser8)
Gene Name	RPA2 REPA2 RPA32 RPA34
Cellular localization	Nucleus . Nucleus, PML body . Redistributes to discrete nuclear foci upon DNA damage in an ATR-dependent manner. .
Purification	The antibody was affinity-purified from rabbit antiserum by affinity-chromatography using epitope-specific immunogen.
Clonality	Polyclonal
Concentration	1 mg/ml
Observed band	32kD
Human Gene ID	6118
Human Swiss-Prot Number	P15927
Alternative Names	Replication protein A 32 kDa subunit (RP-A p32) (Replication factor A protein 2) (RF-A protein 2) (Replication protein A 34 kDa subunit) (RP-A p34)

Background





ELK Biotechnology



Western blot analysis of lysates from Jarkat cells, primary antibody was diluted at 1:1000, 4° over night



+86-27-59760950

ELKbio@ELKbiotech.com

www.elkbiotech.com

23-2, No.388 Gaoxin 2nd Road, Wuhan East Lake Hi-tech Development Zone, Hubei, P.R.C.