

SSRP1 rabbit pAb

Cat No.:ES12943

For research use only

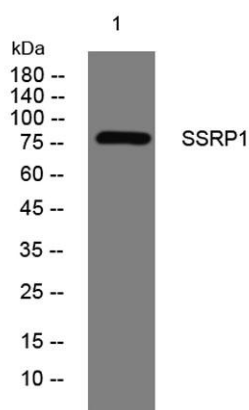
Overview

Product Name	SSRP1 rabbit pAb
Host species	Rabbit
Applications	WB
Species Cross-Reactivity	Human; Mouse;Rat
Recommended dilutions	WB 1: 500-2000
Immunogen	Synthesized peptide derived from human SSRP1 AA range: 209-259
Specificity	This antibody detects endogenous levels of SSRP1 at Human/Mouse/Rat
Formulation	Liquid in PBS containing 50% glycerol, 0.5% BSA and 0.02% sodium azide.
Storage	Store at -20°C. Avoid repeated freeze-thaw cycles.
Protein Name	SSRP1
Gene Name	SSRP1 FACT80
Cellular localization	Nucleus . Nucleus, nucleolus . Chromosome . Colocalizes with RNA polymerase II on chromatin. Recruited to actively transcribed loci. .
Purification	The antibody was affinity-purified from rabbit antiserum by affinity-chromatography using epitope-specific immunogen.
Clonality	Polyclonal
Concentration	1 mg/ml
Observed band	
Human Gene ID	6749
Human Swiss-Prot Number	Q08945
Alternative Names	
Background	The protein encoded by this gene is a subunit of a heterodimer that, along with SUPT16H, forms chromatin transcriptional elongation factor FACT. FACT interacts specifically with histones H2A/H2B to effect nucleosome disassembly and transcription elongation. FACT and cisplatin-damaged DNA may be crucial to the anticancer mechanism of cisplatin.





This encoded protein contains a high mobility group box which most likely constitutes the structure recognition element for cisplatin-modified DNA. This protein also functions as a co-activator of the transcriptional activator p63. An alternatively spliced transcript variant of this gene has been described, but its full-length nature is not known. [provided by RefSeq, Jul 2008],



Western blot analysis of lysates from PC-12 cells, primary antibody was diluted at 1:1000, 4° over night

