

LCE3E rabbit pAb

Cat No.:ES15182

For research use only

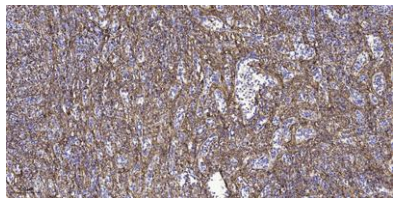
Overview

Product Name	LCE3E rabbit pAb
Host species	Rabbit
Applications	IHC;IF
Species Cross-Reactivity	Human;Rat;Mouse;
Recommended dilutions	IHC-p 1: 50-200
Immunogen	Synthesized peptide derived from human LCE3E AA range: 31-81
Specificity	This antibody detects endogenous levels of LCE3E at Human
Formulation	Liquid in PBS containing 50% glycerol, 0.5% BSA and 0.02% sodium azide.
Storage	Store at -20°C. Avoid repeated freeze-thaw cycles.
Protein Name	LCE3E
Gene Name	LCE3E LEP17
Cellular localization	cornified envelope,cytoplasm,
Purification	The antibody was affinity-purified from rabbit antiserum by affinity-chromatography using epitope-specific immunogen.
Clonality	Polyclonal
Concentration	1 mg/ml
Observed band	
Human Gene ID	353145
Human Swiss-Prot Number	Q5T5B0
Alternative Names	
Background	





ELK Biotechnology



Immunohistochemical analysis of paraffin-embedded human spleen tissue. 1,primary Antibody was diluted at 1:200(4° overnight). 2, Sodium citrate pH 6.0 was used for antigen retrieval(>98°C,20min). 3,Secondary antibody was diluted at 1:200



+86-27-59760950

ELKbio@ELKbiotech.com

www.elkbiotech.com

23-2, No.388 Gaoxin 2nd Road,Wuhan East Lake Hi-tech Development Zone, Hubei , P.R.C