

PP2B-A α rabbit pAb

Cat No.:ES20264

For research use only

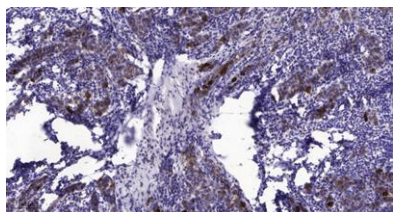
Overview

Product Name	PP2B-A α rabbit pAb
Host species	Rabbit
Applications	WB;IHC
Species Cross-Reactivity	Human;Mouse;Rat
Recommended dilutions	WB 1:500-2000;IHC-p 1:50-300
Immunogen	Synthesized peptide derived from human PP2B-A α
Specificity	This antibody detects endogenous levels of Human,Mouse,Rat PP2B-A α
Formulation	Liquid in PBS containing 50% glycerol, 0.5% BSA and 0.02% sodium azide.
Storage	Store at -20°C. Avoid repeated freeze-thaw cycles.
Protein Name	PP2B-A α
Gene Name	PPP3CA CALNA CNA
Cellular localization	Cytoplasm . Cell membrane ; Peripheral membrane protein . Cell membrane, sarcolemma . Cytoplasm, myofibril, sarcomere, Z line . Cell projection, dendritic spine . Colocalizes with ACTN1 and MYOZ2 at the Z line in heart and skeletal muscle (By similarity).
Purification	The antibody was affinity-purified from rabbit antiserum by affinity-chromatography using epitope-specific immunogen.
Clonality	Polyclonal
Concentration	1 mg/ml
Observed band	
Human Gene ID	5530
Human Swiss-Prot Number	Q08209
Alternative Names	Serine/threonine-protein phosphatase 2B catalytic subunit alpha isoform (EC 3.1.3.16;CAM-PRP catalytic subunit;Calmodulin-dependent calcineurin A subunit alpha isoform)
Background	catalytic activity:A phosphoprotein + H(2)O = a protein + phosphate.,cofactor:Binds 1 Fe(3+) ion per





subunit.,cofactor: Binds 1 zinc ion per subunit.,function: Calcium-dependent, calmodulin-stimulated protein phosphatase. This subunit may have a role in the calmodulin activation of calcineurin. Dephosphorylates HSPB1 and SSH1.,online information: Calcineurin entry,similarity: Belongs to the PPP phosphatase family.,similarity: Belongs to the PPP phosphatase family. PP-2B subfamily.,subcellular location: Colocalizes with ACTN1 and MYOZ2 at the Z line in heart and skeletal muscle.,subunit: Composed of two components (A and B), the A component is the catalytic subunit and the B component confers calcium sensitivity. Interacts with TORC2/CRTC2, MYOZ1, MYOZ2 and MYOZ3.,



Immunohistochemical analysis of paraffin-embedded human Breast cancer. 1, Antibody was diluted at 1:200(4° overnight). 2, Tris-EDTA,pH9.0 was used for antigen retrieval. 3,Secondary antibody was diluted at 1:200(room temperature, 45min).

