

# RWD2B rabbit pAb

Cat No.:ES13303

For research use only

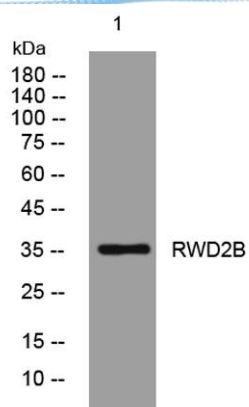
## Overview

|                          |   |
|--------------------------|---|
| Product Name             | RWD2B rabbit pAb  |
| Host species             | Rabbit  |
| Applications             | WB  |
| Species Cross-Reactivity | Human; Mouse  |
| Recommended dilutions    | WB 1: 500-2000  |
| Immunogen                | Synthesized peptide derived from human RWD2B<br>AA range: 228-278   |
| Specificity              | This antibody detects endogenous levels of RWD2B<br>at Human/Mouse  |
| Formulation              | Liquid in PBS containing 50% glycerol, 0.5% BSA and<br>0.02% sodium azide.  |
| Storage                  | Store at -20°C. Avoid repeated freeze-thaw cycles.  |
| Protein Name             | RWD2B   |
| Gene Name                | RWDD2B C21orf6 GL011  |
| Cellular localization    |   |
| Purification             | The antibody was affinity-purified from rabbit<br>antiserum by affinity-chromatography using<br>epitope-specific immunogen. |
| Clonality                | Polyclonal  |
| Concentration            | 1 mg/ml   |
| Observed band            |   |
| Human Gene ID            | 10069   |
| Human Swiss-Prot Number  | P57060  |
| Alternative Names        |   |
| Background               |   |





**ELK Biotechnology**



Western blot analysis of lysates from 293T cells, primary antibody was diluted at 1:1000, 4° over night



+86-27-59760950

ELKbio@ELKbiotech.com

[www.elkbiotech.com](http://www.elkbiotech.com)

23-2, No.388 Gaoxin 2nd Road, Wuhan East Lake Hi-tech Development Zone, Hubei, P.R.C.