

SELH rabbit pAb

Cat No.:ES13163

For research use only

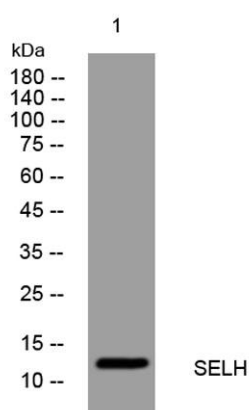
Overview

Product Name	SELH rabbit pAb
Host species	Rabbit
Applications	WB
Species Cross-Reactivity	Human; Mouse
Recommended dilutions	WB 1: 500-2000
Immunogen	Synthesized peptide derived from human SELH AA range: 58-108
Specificity	This antibody detects endogenous levels of SELH at Human/Mouse
Formulation	Liquid in PBS containing 50% glycerol, 0.5% BSA and 0.02% sodium azide.
Storage	Store at -20°C. Avoid repeated freeze-thaw cycles.
Protein Name	SELH
Gene Name	SELH C11orf31
Cellular localization	
Purification	The antibody was affinity-purified from rabbit antiserum by affinity-chromatography using epitope-specific immunogen.
Clonality	Polyclonal
Concentration	1 mg/ml
Observed band	
Human Gene ID	280636
Human Swiss-Prot Number	Q8IZQ5
Alternative Names	
Background	This gene encodes a nucleolar protein, which belongs to the SelWTH family. It functions as an oxidoreductase, and has been shown to protect neurons against UVB-induced damage by inhibiting apoptotic cell death pathways, promote mitochondrial biogenesis and mitochondrial function, and suppress cellular senescence through genome maintenance and redox regulation. This protein is a selenoprotein, containing the rare amino





acid selenocysteine (Sec) at its active site. Sec is encoded by the UGA codon, which normally signals translation termination. The 3' UTRs of selenoprotein mRNAs contain a conserved stem-loop structure, designated the Sec insertion sequence (SECIS) element, that is necessary for the recognition of UGA as a Sec codon, rather than as a stop signal. Alternatively spliced transcript variants have been found for this gene. [provided by RefSeq, May 2016],



Western blot analysis of lysates from KB cells, primary antibody was diluted at 1:1000, 4°over night

