



CP080 rabbit pAb

Cat No.:ES17264

For research use only

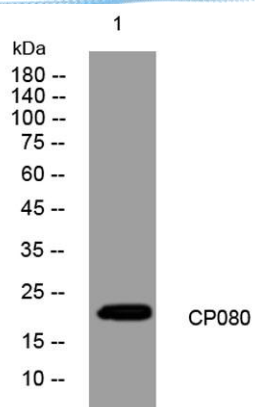
Overview

Product Name	CP080 rabbit pAb
Host species	Rabbit
Applications	WB
Species Cross-Reactivity	Human; Mouse;Rat
Recommended dilutions	WB 1: 500-2000
Immunogen	Synthesized peptide derived from human CP080 AA range: 33-83
Specificity	This antibody detects endogenous levels of CP080 at Human/Mouse/Rat
Formulation	Liquid in PBS containing 50% glycerol, 0.5% BSA and 0.02% sodium azide.
Storage	Store at -20°C. Avoid repeated freeze-thaw cycles.
Protein Name	CP080
Gene Name	C16orf80
Cellular localization	Nucleus. Cytoplasm, cytoskeleton, microtubule organizing center, centrosome, centriole. Cytoplasm, cytoskeleton, cilium basal body. Cell projection, cilium.
Purification	The antibody was affinity-purified from rabbit antiserum by affinity-chromatography using epitope-specific immunogen.
Clonality	Polyclonal
Concentration	1 mg/ml
Observed band	
Human Gene ID	29105
Human Swiss-Prot Number	Q9Y6A4
Alternative Names	
Background	





ELK Biotechnology



Western blot analysis of lysates from HpeG2 cells, primary antibody was diluted at 1:1000, 4° over night



+86-27-59760950

ELKbio@ELKbiotech.com

www.elkbiotech.com

23-2, No.388 Gaoxin 2nd Road, Wuhan East Lake Hi-tech Development Zone, Hubei, P.R.C.