

Peripherin Rabbit pAb

Cat No.:ES20858

For research use only

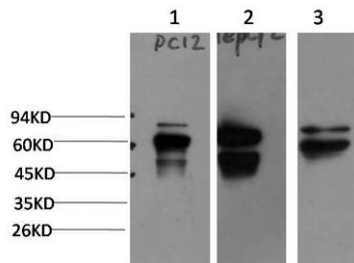
Overview

Product Name	Peripherin Rabbit pAb
Host species	Rabbit
Applications	IHC;WB
Species Cross-Reactivity	Human; Mouse;Rat
Recommended dilutions	IHC-p1:50-200 ,WB 1:1000-2000
Immunogen	Synthesized peptide derived from human Peripherin AA range: 85-135
Specificity	This antibody detects endogenous levels of Peripherin at Human, Mouse,Rat
Formulation	Liquid in PBS containing 50% glycerol, 0.5% BSA and 0.02% sodium azide.
Storage	Store at -20°C. Avoid repeated freeze-thaw cycles.
Protein Name	Peripherin
Gene Name	PRPH NEF4 PRPH1
Cellular localization	Cytoplasm, cytoskeleton . Cell projection, axon . Perikaryon .
Purification	The antibody was affinity-purified from rabbit antiserum by affinity-chromatography using epitope-specific immunogen.
Clonality	Polyclonal
Concentration	1 mg/ml
Observed band	55kD
Human Gene ID	5630
Human Swiss-Prot Number	P41219
Alternative Names	Peripherin (Neurofilament 4)
Background	Peripherin(PRPH) Homo sapiens This gene encodes a cytoskeletal protein found in neurons of the peripheral nervous system. The encoded protein is a type III intermediate filament protein with homology to other cytoskeletal proteins such as desmin, and is a different protein that the peripherin found in photoreceptors. Mutations in this gene have been associated with susceptibility to



amyotrophic lateral sclerosis.

Western blot analysis of 1)PC12 Cell, 2) HepG2 Cell, 3)
Mouse Liver Tissue Lysate using Rabbit pAb diluted at
1:2,000.



Immunohistochemical analysis of paraffin-embedded
human Squamous cell carcinoma of lung. 1, Antibody was
diluted at 1:200(4° overnight). 2, Tris-EDTA,pH9.0 was
used for antigen retrieval. 3,Secondary antibody was
diluted at 1:200(room temperature, 45min).

