

OTOGL rabbit pAb

Cat No.:ES14356

For research use only

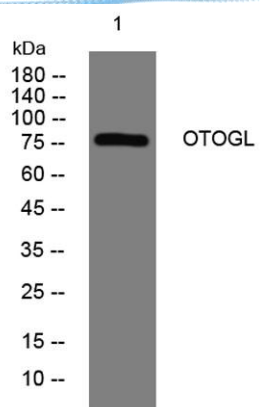
Overview

| | |
|--------------------------|--|
| Product Name | OTOGL rabbit pAb |
| Host species | Rabbit |
| Applications | WB |
| Species Cross-Reactivity | Human;Rat;Mouse; |
| Recommended dilutions | WB 1: 500-2000 |
| Immunogen | Synthesized peptide derived from human OTOGL AA range: 584-634 |
| Specificity | This antibody detects endogenous levels of OTOGL at Human |
| Formulation | Liquid in PBS containing 50% glycerol, 0.5% BSA and 0.02% sodium azide. |
| Storage | Store at -20°C. Avoid repeated freeze-thaw cycles. |
| Protein Name | OTOGL |
| Gene Name | OTOGL C12orf64 |
| Cellular localization | Secreted . |
| Purification | The antibody was affinity-purified from rabbit antiserum by affinity-chromatography using epitope-specific immunogen. |
| Clonality | Polyclonal |
| Concentration | 1 mg/ml |
| Observed band | |
| Human Gene ID | |
| Human Swiss-Prot Number | Q3ZCN5 |
| Alternative Names | |
| Background | The protein encoded by this gene belongs to the otogelin family. This gene is expressed in the inner ear of vertebrates with the highest level of expression seen at the embryonic stage and lowest in adult. Knockdown studies in zebrafish suggest that this gene is essential for normal inner ear function. Mutations in this gene are associated with autosomal recessive deafness. [provided by RefSeq, Dec 2012], |





ELK Biotechnology



Western blot analysis of lysates from PC-12 cells, primary antibody was diluted at 1:1000, 4° over night



+86-27-59760950

ELKbio@ELKbiotech.com

www.elkbiotech.com

23-2, No.388 Gaoxin 2nd Road, Wuhan East Lake Hi-tech Development Zone, Hubei, P.R.C.