

S35A3 rabbit pAb

Cat No.:ES13244

For research use only

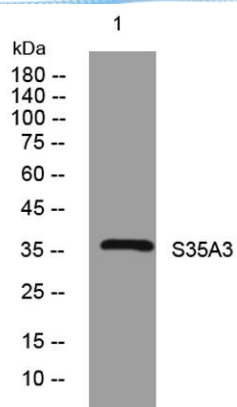
Overview

Product Name	S35A3 rabbit pAb
Host species	Rabbit
Applications	WB
Species Cross-Reactivity	Human; Mouse;Rat
Recommended dilutions	WB 1: 500-2000
Immunogen	Synthesized peptide derived from human S35A3 AA range: 263-313
Specificity	This antibody detects endogenous levels of S35A3 at Human/Mouse/Rat
Formulation	Liquid in PBS containing 50% glycerol, 0.5% BSA and 0.02% sodium azide.
Storage	Store at -20°C. Avoid repeated freeze-thaw cycles.
Protein Name	S35A3
Gene Name	SLC35A3
Cellular localization	Golgi apparatus membrane ; Multi-pass membrane protein .
Purification	The antibody was affinity-purified from rabbit antiserum by affinity-chromatography using epitope-specific immunogen.
Clonality	Polyclonal
Concentration	1 mg/ml
Observed band	
Human Gene ID	23443
Human Swiss-Prot Number	Q9Y2D2
Alternative Names	
Background	This gene encodes a UDP-N-acetylglucosamine transporter found in the golgi apparatus membrane. In cattle, a missense mutation in this gene causes complex vertebral malformation. Alternative splicing results in multiple transcript variants. [provided by RefSeq, Nov 2012],





ELK Biotechnology



Western blot analysis of lysates from 3T3 cells, primary antibody was diluted at 1:1000, 4° over night



+86-27-59760950

ELKbio@ELKbiotech.com

www.elkbiotech.com

23-2, No.388 Gaoxin 2nd Road, Wuhan East Lake Hi-tech Development Zone, Hubei, P.R.C.