

SARAF rabbit pAb

Cat No.:ES13200

For research use only

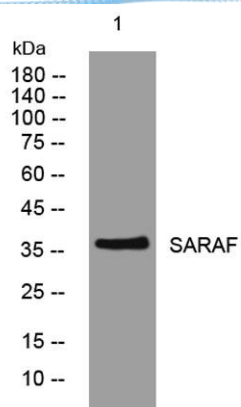
Overview

Product Name	SARAF rabbit pAb
Host species	Rabbit
Applications	WB
Species Cross-Reactivity	Human; Mouse;Rat
Recommended dilutions	WB 1: 500-2000
Immunogen	Synthesized peptide derived from human SARAF AA range: 277-327
Specificity	This antibody detects endogenous levels of SARAF at Human/Mouse/Rat
Formulation	Liquid in PBS containing 50% glycerol, 0.5% BSA and 0.02% sodium azide.
Storage	Store at -20°C. Avoid repeated freeze-thaw cycles.
Protein Name	SARAF
Gene Name	TMEM66 SARAF XTP3 HSPC035 NPD003 PSEC0019 UNQ1967/PRO4499
Cellular localization	Endoplasmic reticulum membrane ; Single-pass type I membrane protein . Translocates to the endoplasmic reticulum-plasma membrane (ER-PM) region in a STIM1-dependent manner following cytosolic Ca(2+) elevation.; [Isoform 2]: Endoplasmic reticulum membrane;
Purification	The antibody was affinity-purified from rabbit antiserum by affinity-chromatography using epitope-specific immunogen.
Clonality	Polyclonal
Concentration	1 mg/ml
Observed band	
Human Gene ID	51669
Human Swiss-Prot Number	Q96BY9
Alternative Names	
Background	





ELK Biotechnology



Western blot analysis of lysates from 293T cells, primary antibody was diluted at 1:1000, 4° over night



+86-27-59760950

ELKbio@ELKbiotech.com

www.elkbiotech.com

23-2, No.388 Gaoxin 2nd Road, Wuhan East Lake Hi-tech Development Zone, Hubei, P.R.C.