

# G6PC2 rabbit pAb

Cat No.:ES16294

For research use only

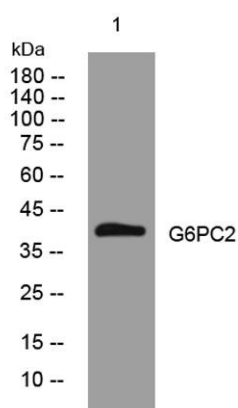
## Overview

Product Name	G6PC2 rabbit pAb
Host species	Rabbit
Applications	WB
Species Cross-Reactivity	Human; Mouse
Recommended dilutions	WB 1:500-2000
Immunogen	Synthesized peptide derived from human G6PC2 AA range: 175-225
Specificity	This antibody detects endogenous levels of G6PC2 at Human/Mouse
Formulation	Liquid in PBS containing 50% glycerol, 0.5% BSA and 0.02% sodium azide.
Storage	Store at -20°C. Avoid repeated freeze-thaw cycles.
Protein Name	G6PC2
Gene Name	G6PC2 IGRP
Cellular localization	Endoplasmic reticulum membrane ; Multi-pass membrane protein .
Purification	The antibody was affinity-purified from rabbit antiserum by affinity-chromatography using epitope-specific immunogen.
Clonality	Polyclonal
Concentration	1 mg/ml
Observed band	38kD
Human Gene ID	57818
Human Swiss-Prot Number	Q9NQR9
Alternative Names	Glucose-6-phosphatase 2 (G-6-Pase 2) (G6Pase 2) (EC 3.1.3.9) (Islet-specific glucose-6-phosphatase catalytic subunit-related protein)
Background	This gene encodes an enzyme belonging to the glucose-6-phosphatase catalytic subunit family. These enzymes are part of a multicomponent integral membrane system that catalyzes the hydrolysis of glucose-6-phosphate, the terminal step in gluconeogenic and glycogenolytic pathways,





allowing the release of glucose into the bloodstream. The family member encoded by this gene is found in pancreatic islets and does not exhibit phosphohydrolase activity, but it is a major target of cell-mediated autoimmunity in diabetes. Several alternatively spliced transcript variants of this gene have been described, but their biological validity has not been determined. [provided by RefSeq, Jul 2008],



Western blot analysis of lysates from Hela cells, primary antibody was diluted at 1:1000, 4° over night

