

KISHB rabbit pAb

Cat No.:ES15300

For research use only

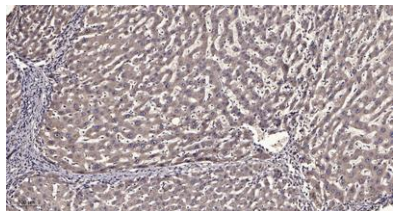
Overview

Product Name	KISHB rabbit pAb
Host species	Rabbit
Applications	IHC;IF
Species Cross-Reactivity	Human; Mouse
Recommended dilutions	IHC-p 1: 50-200
Immunogen	Synthesized peptide derived from human KISHB AA range: 14-64
Specificity	This antibody detects endogenous levels of KISHB at Human/Mouse
Formulation	Liquid in PBS containing 50% glycerol, 0.5% BSA and 0.02% sodium azide.
Storage	Store at -20°C. Avoid repeated freeze-thaw cycles.
Protein Name	KISHB
Gene Name	TMEM167B C1orf119 AD-020
Cellular localization	Golgi apparatus membrane ; Single-pass type I membrane protein .
Purification	The antibody was affinity-purified from rabbit antiserum by affinity-chromatography using epitope-specific immunogen.
Clonality	Polyclonal
Concentration	1 mg/ml
Observed band	
Human Gene ID	56900
Human Swiss-Prot Number	Q9NRX6
Alternative Names	
Background	





ELK Biotechnology



Immunohistochemical analysis of paraffin-embedded human liver cancer. 1, Antibody was diluted at 1:200(4° overnight). 2, Tris-EDTA,pH9.0 was used for antigen retrieval. 3,Secondary antibody was diluted at 1:200(room temperature, 45min).



+86-27-59760950

ELKbio@ELKbiotech.com

www.elkbiotech.com

23-2, No.388 Gaoxin 2nd Road,Wuhan East Lake Hi-tech Development Zone, Hubei , P.R.C