



FRA1 (phospho-Ser265) rabbit pAb

Cat No.:ES16324

For research use only

Overview

Product Name	FRA1 (phospho-Ser265) rabbit pAb
Host species	Rabbit
Applications	WB
Species Cross-Reactivity	Human;Mouse;Rat
Recommended dilutions	WB 1:1000-2000
Immunogen	Synthesized phospho peptide around human FRA1 (Ser265)
Specificity	This antibody detects endogenous levels of Human Mouse Rat FRA1 (phospho-Ser265)
Formulation	Liquid in PBS containing 50% glycerol, 0.5% BSA and 0.02% sodium azide.
Storage	Store at -20°C. Avoid repeated freeze-thaw cycles.
Protein Name	FRA1 (Ser265)
Gene Name	FOSL1 FRA1
Cellular localization	Nucleus .
Purification	The antibody was affinity-purified from rabbit antiserum by affinity-chromatography using epitope-specific immunogen.
Clonality	Polyclonal
Concentration	1 mg/ml
Observed band	43kD
Human Gene ID	8061
Human Swiss-Prot Number	P15407
Alternative Names	Fos-related antigen 1 (FRA-1)
Background	The Fos gene family consists of 4 members: FOS, FOSB, FOSL1, and FOSL2. These genes encode leucine zipper proteins that can dimerize with proteins of the JUN family, thereby forming the transcription factor complex AP-1. As such, the FOS proteins have been implicated as regulators of cell proliferation, differentiation, and transformation. Several transcript variants encoding different isoforms have been found for this gene. [provided

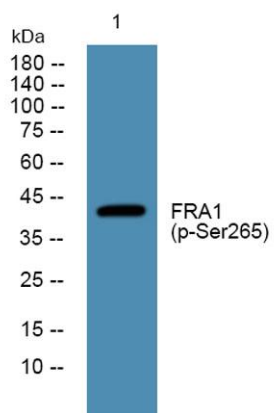




ELK Biotechnology

by RefSeq, Jul 2014],

Western blot analysis of lysates from DU145 cells, primary antibody was diluted at 1:1000, 4° over night



+86-27-59760950

ELKbio@ELKbiotech.com

www.elkbiotech.com

23-2, No.388 Gaoxin 2nd Road, Wuhan East Lake Hi-tech Development Zone, Hubei, P.R.C.