

Glutamate Receptor 1 rabbit pAb

Cat No.:ES20732

For research use only

Overview

Product Name	Glutamate Receptor 1 rabbit pAb
Host species	Rabbit
Applications	WB;IHC;IF
Species Cross-Reactivity	Human;Rat;Mouse
Recommended dilutions	Western Blot: 1/500 - 1/2000. Immunohistochemistry: 1/100 - 1/300. ELISA: 1/40000. Not yet tested in other applications.
Immunogen	Synthetic Peptide of Glutamate Receptor 1 AA range: 773-823
Specificity	The antibody detects endogenous Glutamate Receptor 1 protein
Formulation	Liquid in PBS containing 50% glycerol, 0.5% BSA and 0.02% sodium azide.
Storage	Store at -20°C. Avoid repeated freeze-thaw cycles.
Protein Name	Glutamate receptor 1 (GluR-1) (AMPA-selective glutamate receptor 1) (GluR-A) (GluR-K1) (Glutamate receptor ionotropic, AMPA 1) (GluA1)
Gene Name	GRIA1
Cellular localization	Cell membrane ; Multi-pass membrane protein . Endoplasmic reticulum membrane ; Multi-pass membrane protein . Cell junction, synapse, postsynaptic cell membrane ; Multi-pass membrane protein . Cell junction, synapse, postsynaptic density membrane ; Multi-p
Purification	The antibody was affinity-purified from rabbit antiserum by affinity-chromatography using epitope-specific immunogen.
Clonality	Polyclonal
Concentration	1 mg/ml
Observed band	100kD
Human Gene ID	2890
Human Swiss-Prot Number	P42261
Alternative Names	Glutamate receptor 1 (GluR-1;AMPA-selective

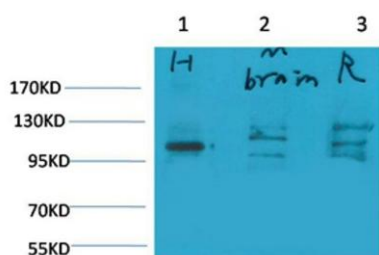




Background

glutamate receptor 1;GluR-A;GluR-K1;Glutamate receptor ionotropic, AMPA 1;GluA1)
Glutamate receptors are the predominant excitatory neurotransmitter receptors in the mammalian brain and are activated in a variety of normal neurophysiologic processes. These receptors are heteromeric protein complexes with multiple subunits, each possessing transmembrane regions, and all arranged to form a ligand-gated ion channel. The classification of glutamate receptors is based on their activation by different pharmacologic agonists. This gene belongs to a family of alpha-amino-3-hydroxy-5-methyl-4-isoxazole propionate (AMPA) receptors. Alternatively spliced transcript variants encoding different isoforms have been found for this gene. [provided by RefSeq, Jul 2008],

Western blot analysis of 1) Human Brain Tissue, 2)Mouse Brain Tissue, 3) Rat Brain Tissue with Glutamate Receptor 1 Rabbit pAb diluted at 1:2,000.



Immunohistochemical analysis of paraffin-embedded Rat Brain Tissue using Glutamate Receptor 1Rabbit pAb diluted at 1:200.

