

# SIAH1 rabbit pAb

Cat No.:ES13109

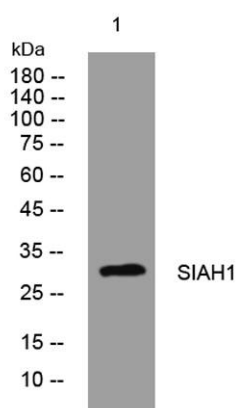
For research use only

## Overview

Product Name	SIAH1 rabbit pAb
Host species	Rabbit
Applications	WB
Species Cross-Reactivity	Human;Rat
Recommended dilutions	WB 1: 500-2000
Immunogen	Synthesized peptide derived from human SIAH1 AA range: 157-207
Specificity	This antibody detects endogenous levels of SIAH1 at Human/Rat
Formulation	Liquid in PBS containing 50% glycerol, 0.5% BSA and 0.02% sodium azide.
Storage	Store at -20°C. Avoid repeated freeze-thaw cycles.
Protein Name	SIAH1
Gene Name	SIAH1 HUMSIAH
Cellular localization	Cytoplasm. Nucleus. Predominantly cytoplasmic. Partially nuclear.
Purification	The antibody was affinity-purified from rabbit antiserum by affinity-chromatography using epitope-specific immunogen.
Clonality	Polyclonal
Concentration	1 mg/ml
Observed band	
Human Gene ID	6477
Human Swiss-Prot Number	Q8IUQ4
Alternative Names	
Background	This gene encodes a protein that is a member of the seven in absentia homolog (SIAH) family. The protein is an E3 ligase and is involved in ubiquitination and proteasome-mediated degradation of specific proteins. The activity of this ubiquitin ligase has been implicated in the development of certain forms of Parkinson's disease, the regulation of the cellular response to



hypoxia and induction of apoptosis. Alternative splicing results in several additional transcript variants, some encoding different isoforms and others that have not been fully characterized. [provided by RefSeq, Jul 2008],



Western blot analysis of lysates from HeLa cells, primary antibody was diluted at 1:1000, 4° over night

