

RN169 rabbit pAb

Cat No.:ES13372

For research use only

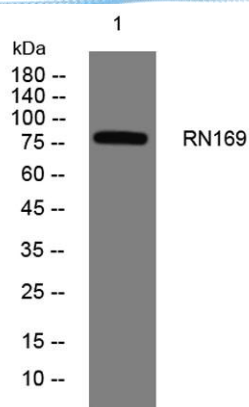
Overview

Product Name	RN169 rabbit pAb
Host species	Rabbit
Applications	WB;ELISA;IHC
Species Cross-Reactivity	Human; Mouse
Recommended dilutions	WB 1:500-2000;IHC-p 1:50-300; ELISA 2000-20000
Immunogen	Synthesized peptide derived from human RN169 AA range: 123-173
Specificity	This antibody detects endogenous levels of RN169 at Human/Mouse
Formulation	Liquid in PBS containing 50% glycerol, 0.5% BSA and 0.02% sodium azide.
Storage	Store at -20°C. Avoid repeated freeze-thaw cycles.
Protein Name	RN169
Gene Name	RNF169 KIAA1991
Cellular localization	Chromosome . Nucleus, nucleoplasm . Localizes to sites of double-strand breaks (DSBs) following DNA damage. Recruited to DSBs via recognition of RNF168-dependent ubiquitin products. .
Purification	The antibody was affinity-purified from rabbit antiserum by affinity-chromatography using epitope-specific immunogen.
Clonality	Polyclonal
Concentration	1 mg/ml
Observed band	
Human Gene ID	254225
Human Swiss-Prot Number	Q8NCN4
Alternative Names	
Background	

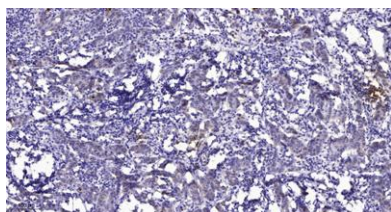




ELK Biotechnology



Western blot analysis of lysates from MCF-7 cells, primary antibody was diluted at 1:1000, 4° over night



Immunohistochemical analysis of paraffin-embedded human Breast cancer. 1, Antibody was diluted at 1:200(4° overnight). 2, Tris-EDTA, pH9.0 was used for antigen retrieval. 3, Secondary antibody was diluted at 1:200(room temperature, 45min).



+86-27-59760950

ELKbio@ELKbiotech.com

www.elkbiotech.com

23-2, No.388 Gaoxin 2nd Road, Wuhan East Lake Hi-tech Development Zone, Hubei, P.R.C.