

LIPA4 rabbit pAb

Cat No.:ES15154

For research use only

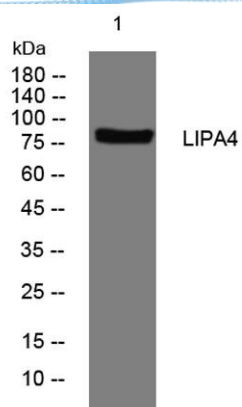
Overview

Product Name	LIPA4 rabbit pAb
Host species	Rabbit
Applications	WB
Species Cross-Reactivity	Human;Rat
Recommended dilutions	WB 1: 500-2000
Immunogen	Synthesized peptide derived from human LIPA4 AA range: 513-563
Specificity	This antibody detects endogenous levels of LIPA4 at Human/Rat
Formulation	Liquid in PBS containing 50% glycerol, 0.5% BSA and 0.02% sodium azide.
Storage	Store at -20°C. Avoid repeated freeze-thaw cycles.
Protein Name	LIPA4
Gene Name	PPFIA4 KIAA0897
Cellular localization	Cytoplasm . Cell surface . Colocalizes with PTPRF at the cell surface. .
Purification	The antibody was affinity-purified from rabbit antiserum by affinity-chromatography using epitope-specific immunogen.
Clonality	Polyclonal
Concentration	1 mg/ml
Observed band	
Human Gene ID	8497
Human Swiss-Prot Number	O75335
Alternative Names	
Background	PPFIA4, or liprin-alpha-4, belongs to the liprin-alpha gene family. See liprin-alpha-1 (LIP1, or PPFIA1; MIM 611054) for background on liprins.[supplied by OMIM, Mar 2008],





ELK Biotechnology



Western blot analysis of lysates from HeLa cells, primary antibody was diluted at 1:1000, 4° over night



+86-27-59760950

ELKbio@ELKbiotech.com

www.elkbiotech.com

23-2, No.388 Gaoxin 2nd Road, Wuhan East Lake Hi-tech Development Zone, Hubei, P.R.C.