

# GBRAP rabbit pAb

Cat No.:ES16226

For research use only

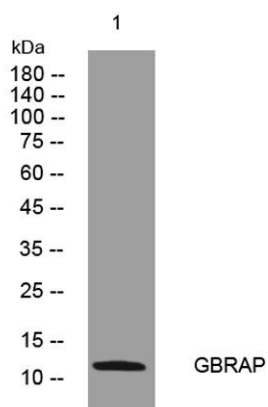
## Overview

Product Name	GBRAP rabbit pAb
Host species	Rabbit
Applications	WB
Species Cross-Reactivity	Human; Mouse;Rat
Recommended dilutions	WB 1: 500-2000
Immunogen	Synthesized peptide derived from human GBRAP AA range: 8-58
Specificity	This antibody detects endogenous levels of GBRAP at Human/Mouse/Rat
Formulation	Liquid in PBS containing 50% glycerol, 0.5% BSA and 0.02% sodium azide.
Storage	Store at -20°C. Avoid repeated freeze-thaw cycles.
Protein Name	GBRAP
Gene Name	GABARAP FLC3B HT004
Cellular localization	Cytoplasmic vesicle, autophagosome membrane . Endomembrane system . Cytoplasm, cytoskeleton . Golgi apparatus membrane . Cytoplasmic vesicle . Largely associated with intracellular membrane structures including the Golgi apparatus and postsynaptic cistern
Purification	The antibody was affinity-purified from rabbit antiserum by affinity-chromatography using epitope-specific immunogen.
Clonality	Polyclonal
Concentration	1 mg/ml
Observed band	
Human Gene ID	11337
Human Swiss-Prot Number	O95166
Alternative Names	
Background	Gamma-aminobutyric acid A receptors [GABA(A) receptors] are ligand-gated chloride channels that mediate inhibitory neurotransmission. This gene encodes GABA(A) receptor-associated protein,





which is highly positively charged in its N-terminus and shares sequence similarity with light chain-3 of microtubule-associated proteins 1A and 1B. This protein clusters neurotransmitter receptors by mediating interaction with the cytoskeleton. [provided by RefSeq, Jul 2008],



Western blot analysis of lysates from HeLa cells, primary antibody was diluted at 1:1000, 4° over night

