

# MPPD2 rabbit pAb

Cat No.:ES19858

For research use only

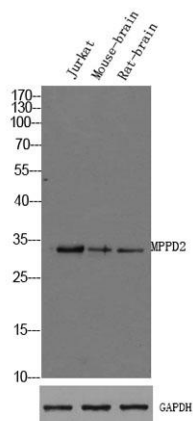
## Overview

Product Name	MPPD2 rabbit pAb
Host species	Rabbit
Applications	WB
Species Cross-Reactivity	Human;Mouse;Rat
Recommended dilutions	WB 1:1000-2000
Immunogen	Synthesized peptide derived from human MPPD2 AA range: 143-193
Specificity	This antibody detects endogenous levels of human MPPD2
Formulation	Liquid in PBS containing 50% glycerol, 0.5% BSA and 0.02% sodium azide.
Storage	Store at -20°C. Avoid repeated freeze-thaw cycles.
Protein Name	Metallophosphoesterase MPPED2 (EC 3.1.-.-) (Fetal brain protein 239) (239FB) (Metallophosphoesterase domain-containing protein 2)
Gene Name	MPPED2 C11orf8 FAM1B
Cellular localization	
Purification	The antibody was affinity-purified from rabbit antiserum by affinity-chromatography using epitope-specific immunogen.
Clonality	Polyclonal
Concentration	1 mg/ml
Observed band	
Human Gene ID	744
Human Swiss-Prot Number	Q15777
Alternative Names	
Background	





**ELK Biotechnology**



Western Blot analysis of Jurkat mouse-brain, rat-brain cell lysis. Primary Antibody was diluted at 1:1000. Secondary antibody(catalog#:RS23920) was diluted at 1:10000



+86-27-59760950

[ELKbio@ELKbiotech.com](mailto:ELKbio@ELKbiotech.com)

[www.elkbiotech.com](http://www.elkbiotech.com)

23-2, No.388 Gaoxin 2nd Road,Wuhan East Lake Hi-tech Development Zone, Hubei , P.R.C