

RGP1 rabbit pAb

Cat No.:ES13405

For research use only

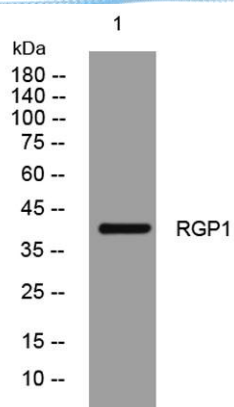
Overview

Product Name	RGP1 rabbit pAb
Host species	Rabbit
Applications	WB
Species Cross-Reactivity	Human; Mouse
Recommended dilutions	WB 1: 500-2000
Immunogen	Synthesized peptide derived from human RGP1 AA range: 27-77
Specificity	This antibody detects endogenous levels of RGP1 at Human/Mouse
Formulation	Liquid in PBS containing 50% glycerol, 0.5% BSA and 0.02% sodium azide.
Storage	Store at -20°C. Avoid repeated freeze-thaw cycles.
Protein Name	RGP1
Gene Name	RGP1 KIAA0258
Cellular localization	Cytoplasm, cytosol . Membrane .
Purification	The antibody was affinity-purified from rabbit antiserum by affinity-chromatography using epitope-specific immunogen.
Clonality	Polyclonal
Concentration	1 mg/ml
Observed band	
Human Gene ID	9827
Human Swiss-Prot Number	Q92546
Alternative Names	
Background	





ELK Biotechnology



Western blot analysis of lysates from A431 cells, primary antibody was diluted at 1:1000, 4° over night



+86-27-59760950

ELKbio@ELKbiotech.com

www.elkbiotech.com

23-2, No.388 Gaoxin 2nd Road, Wuhan East Lake Hi-tech Development Zone, Hubei, P.R.C.