

S22AG rabbit pAb

Cat No.:ES13263

For research use only

Overview

Product Name	S22AG rabbit pAb
Host species	Rabbit
Applications	WB
Species Cross-Reactivity	Human; Mouse
Recommended dilutions	WB 1: 500-2000
Immunogen	Synthesized peptide derived from human S22AG AA range: 49-99
Specificity	This antibody detects endogenous levels of S22AG at Human/Mouse
Formulation	Liquid in PBS containing 50% glycerol, 0.5% BSA and 0.02% sodium azide.
Storage	Store at -20°C. Avoid repeated freeze-thaw cycles.
Protein Name	S22AG
Gene Name	SLC22A16 OCT6
Cellular localization	Membrane ; Multi-pass membrane protein . Cell membrane . Detected in the plasma membrane of Sertoli cells and in the luminal membrane of epithelial cells in the epididymis.
Purification	The antibody was affinity-purified from rabbit antiserum by affinity-chromatography using epitope-specific immunogen.
Clonality	Polyclonal
Concentration	1 mg/ml
Observed band	
Human Gene ID	85413
Human Swiss-Prot Number	Q86VW1
Alternative Names	
Background	This gene encodes a member of the organic zwitterion transporter protein family which transports carnitine. The encoded protein has also been shown to transport anticancer drugs like bleomycin (PMID: 20037140) successful treatment has been correlated with the level of activity of this

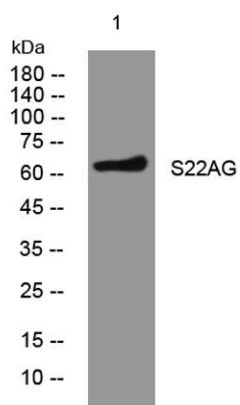




ELK Biotechnology

transporter in tumor cells. [provided by RefSeq, Dec 2011],

Western blot analysis of lysates from 293T cells, primary antibody was diluted at 1:1000, 4° over night



+86-27-59760950

ELKbio@ELKbiotech.com

www.elkbiotech.com

23-2, No.388 Gaoxin 2nd Road, Wuhan East Lake Hi-tech Development Zone, Hubei, P.R.C.