

TIM8B rabbit pAb

Cat No.:ES12694

For research use only

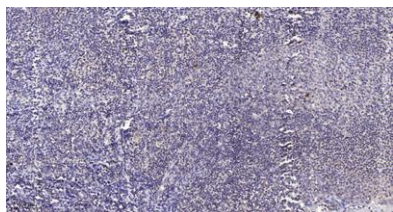
Overview

Product Name	TIM8B rabbit pAb
Host species	Rabbit
Applications	IHC;IF
Species Cross-Reactivity	Human; Mouse;Rat
Recommended dilutions	IHC-p 1: 50-200
Immunogen	Synthesized peptide derived from human TIM8B AA range: 1-51
Specificity	This antibody detects endogenous levels of TIM8B at Human/Mouse/Rat
Formulation	Liquid in PBS containing 50% glycerol, 0.5% BSA and 0.02% sodium azide.
Storage	Store at -20°C. Avoid repeated freeze-thaw cycles.
Protein Name	TIM8B
Gene Name	TIMM8B DDP2 DDPL TIM8B
Cellular localization	Mitochondrion inner membrane ; Peripheral membrane protein ; Intermembrane side .
Purification	The antibody was affinity-purified from rabbit antiserum by affinity-chromatography using epitope-specific immunogen.
Clonality	Polyclonal
Concentration	1 mg/ml
Observed band	
Human Gene ID	26521
Human Swiss-Prot Number	Q9Y5J9
Alternative Names	
Background	This gene encodes a member of a well-conserved family of proteins with similarity to yeast Tim mitochondrial import proteins. This gene is encoded by a nuclear gene and is transported into the intermembrane space of the mitochondrion. When formed into complexes, these proteins guide membrane-spanning proteins across the mitochondrial intermembrane space before they are





added into the mitochondrial inner membrane. This gene is adjacent to succinate dehydrogenase, subunit D (SDHD), in which mutations have been found in affected members of families with hereditary paraganglioma.[provided by RefSeq, Aug 2009],



Immunohistochemical analysis of paraffin-embedded human tonsil. 1, Antibody was diluted at 1:200(4° overnight). 2, Tris-EDTA,pH9.0 was used for antigen retrieval. 3,Secondary antibody was diluted at 1:200(room temperature, 30min).

