

GALT2 rabbit pAb

Cat No.:ES16271

For research use only

Overview

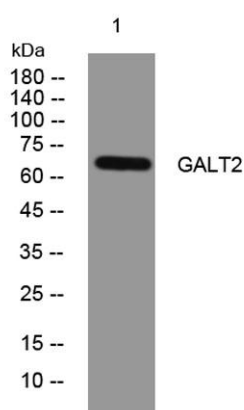
Product Name	GALT2 rabbit pAb
Host species	Rabbit
Applications	WB
Species Cross-Reactivity	Human; Mouse
Recommended dilutions	WB 1:500-2000
Immunogen	Synthesized peptide derived from human GALT2 AA range: 30-80
Specificity	This antibody detects endogenous levels of GALT2 at Human/Mouse
Formulation	Liquid in PBS containing 50% glycerol, 0.5% BSA and 0.02% sodium azide.
Storage	Store at -20°C. Avoid repeated freeze-thaw cycles.
Protein Name	GALT2
Gene Name	GALNT2
Cellular localization	Golgi apparatus, Golgi stack membrane ; Single-pass type II membrane protein . Secreted . Resides preferentially in the trans and medial parts of the Golgi stack. A secreted form also exists.
Purification	The antibody was affinity-purified from rabbit antiserum by affinity-chromatography using epitope-specific immunogen.
Clonality	Polyclonal
Concentration	1 mg/ml
Observed band	65kD
Human Gene ID	2590
Human Swiss-Prot Number	Q10471
Alternative Names	Polypeptide N-acetylgalactosaminyltransferase 2 (EC 2.4.1.41) (Polypeptide GalNAc transferase 2) (GalNAc-T2) (pp-GaNTase 2) (Protein-UDP acetylgalactosaminyltransferase 2) (UDP-GalNAc:polypeptide N-acetylgalactosaminyltransferase 2) [Cleaved into: Polypep





Background

This gene encodes a member of the glycosyltransferase 2 protein family. Members of this family initiate mucin-type O-glycosylation of peptides in the Golgi apparatus. The encoded protein may be involved in O-linked glycosylation of the immunoglobulin A1 hinge region. This gene may influence triglyceride levels, and may be involved Type 2 diabetes, as well as several types of cancer. Alternative splicing results in multiple transcript variants. [provided by RefSeq, May 2014],



Western blot analysis of lysates from MCF-7 cells, primary antibody was diluted at 1:1000, 4° over night

