

Kallikrein-6 (Cleaved-Leu22) rabbit pAb

Cat No.:ES20019

For research use only

Overview

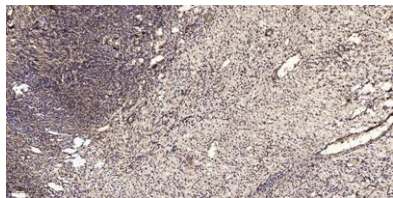
| | |
|--------------------------|--|
| Product Name | Kallikrein-6 (Cleaved-Leu22) rabbit pAb |
| Host species | Rabbit |
| Applications | WB; ELISA;IHC |
| Species Cross-Reactivity | Human;Rat;Mouse; |
| Recommended dilutions | WB 1:500-2000;IHC-p 1:50-300; ELISA 2000-20000 |
| Immunogen | Synthesized peptide derived from human Kallikrein-6 (Cleaved-Leu22) |
| Specificity | This antibody detects endogenous levels of Human Kallikrein-6 (Cleaved-Leu22, protein was cleaved amino acid sequence between 21-22) |
| Formulation | Liquid in PBS containing 50% glycerol, 0.5% BSA and 0.02% sodium azide. |
| Storage | Store at -20°C. Avoid repeated freeze-thaw cycles. |
| Protein Name | Kallikrein-6 (Cleaved-Leu22) |
| Gene Name | KLK6 PRSS18 PRSS9 |
| Cellular localization | Secreted. Nucleus, nucleolus. Cytoplasm. Mitochondrion. Microsome. In brain, detected in the nucleus of glial cells and in the nucleus and cytoplasm of neurons. Detected in the mitochondrial and microsomal fractions of HEK-293 cells and released into the |
| Purification | The antibody was affinity-purified from rabbit antiserum by affinity-chromatography using epitope-specific immunogen. |
| Clonality | Polyclonal |
| Concentration | 1 mg/ml |
| Observed band | 25kD |
| Human Gene ID | 5653 |
| Human Swiss-Prot Number | Q92876 |
| Alternative Names | Kallikrein-6 (EC 3.4.21.-;Neurosin;Protease M;SP59;Serine protease 18;Serine protease 9;Zyme) |

Background





ELK Biotechnology



Immunohistochemical analysis of paraffin-embedded human oophoroma. 1, Antibody was diluted at 1:200(4° overnight). 2, Tris-EDTA,pH9.0 was used for antigen retrieval. 3,Secondary antibody was diluted at 1:200(room temperature, 45min).



+86-27-59760950

ELKbio@ELKbiotech.com

www.elkbiotech.com

23-2, No.388 Gaoxin 2nd Road,Wuhan East Lake Hi-tech Development Zone, Hubei , P.R.C