

RAB7A rabbit pAb

Cat No.:ES13818

For research use only

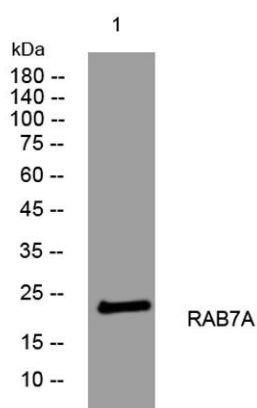
Overview

| | |
|--------------------------|---|
| Product Name | RAB7A rabbit pAb |
| Host species | Rabbit |
| Applications | WB |
| Species Cross-Reactivity | Human; Mouse;Rat |
| Recommended dilutions | WB 1: 500-2000 |
| Immunogen | Synthesized peptide derived from human RAB7A AA range: 84-134 |
| Specificity | This antibody detects endogenous levels of RAB7A at Human/Mouse/Rat |
| Formulation | Liquid in PBS containing 50% glycerol, 0.5% BSA and 0.02% sodium azide. |
| Storage | Store at -20°C. Avoid repeated freeze-thaw cycles. |
| Protein Name | RAB7A |
| Gene Name | RAB7A RAB7 |
| Cellular localization | Cytoplasmic vesicle, phagosome membrane ; Peripheral membrane protein ; Cytoplasmic side . Late endosome membrane ; Peripheral membrane protein ; Cytoplasmic side . Lysosome membrane ; Peripheral membrane protein ; Cytoplasmic side . Melanosome membrane ; |
| Purification | The antibody was affinity-purified from rabbit antiserum by affinity-chromatography using epitope-specific immunogen. |
| Clonality | Polyclonal |
| Concentration | 1 mg/ml |
| Observed band | |
| Human Gene ID | 7879 |
| Human Swiss-Prot Number | P51149 |
| Alternative Names | |
| Background | RAB family members are small, RAS-related GTP-binding proteins that are important regulators of vesicular transport. Each RAB protein targets multiple proteins that act in exocytic / endocytic |





pathways. This gene encodes a RAB family member that regulates vesicle traffic in the late endosomes and also from late endosomes to lysosomes. This encoded protein is also involved in the cellular vacuolation of the VacA cytotoxin of *Helicobacter pylori*. Mutations at highly conserved amino acid residues in this gene have caused some forms of Charcot-Marie-Tooth (CMT) type 2 neuropathies. [provided by RefSeq, Jul 2008],



Western blot analysis of lysates from CACO2 cells, primary antibody was diluted at 1:1000, 4° over night

