

HOME2 rabbit pAb

Cat No.:ES15690

For research use only

Overview

Product Name	HOME2 rabbit pAb
Host species	Rabbit
Applications	WB
Species Cross-Reactivity	Human; Mouse;Rat
Recommended dilutions	WB 1:500-2000
Immunogen	Synthesized peptide derived from human HOME2 AA range: 17-67
Specificity	This antibody detects endogenous levels of HOME2 at Human/Mouse/Rat
Formulation	Liquid in PBS containing 50% glycerol, 0.5% BSA and 0.02% sodium azide.
Storage	Store at -20°C. Avoid repeated freeze-thaw cycles.
Protein Name	HOME2
Gene Name	HOMER2
Cellular localization	Cytoplasm . Cell membrane . Cell junction, synapse, postsynaptic density. Cell junction, synapse. Cell projection, stereocilium . Postsynaptic density of neuronal cells. The stabilization and clustering of the metabotropic glutamate receptors appears to b
Purification	The antibody was affinity-purified from rabbit antiserum by affinity-chromatography using epitope-specific immunogen.
Clonality	Polyclonal
Concentration	1 mg/ml
Observed band	38kD
Human Gene ID	9455
Human Swiss-Prot Number	Q9NSB8
Alternative Names	Homer protein homolog 2 (Homer-2) (Cupidin)
Background	This gene encodes a member of the homer family of dendritic proteins. Members of this family regulate group 1 metabotropic glutamate receptor function. The encoded protein is a postsynaptic density scaffolding protein. Alternative splicing results in

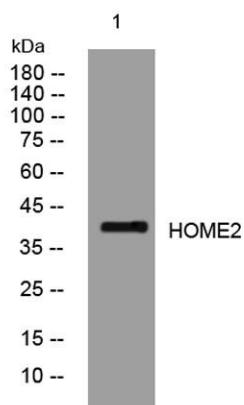




ELK Biotechnology

multiple transcript variants. Two related pseudogenes have been identified on chromosome 14. [provided by RefSeq, Jun 2011],

Western blot analysis of lysates from Hela cells, primary antibody was diluted at 1:1000, 4° over night



+86-27-59760950

ELKbio@ELKbiotech.com

www.elkbiotech.com

23-2, No.388 Gaoxin 2nd Road, Wuhan East Lake Hi-tech Development Zone, Hubei, P.R.C.