

KR161 rabbit pAb

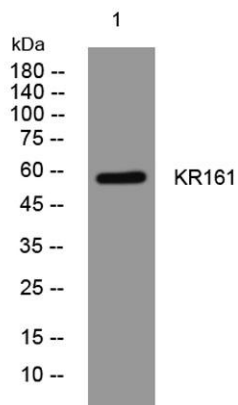
Cat No.:ES15262

For research use only

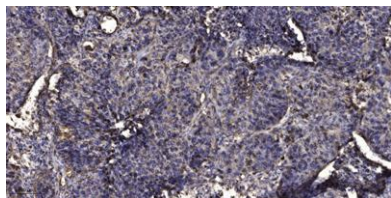
Overview

Product Name	KR161 rabbit pAb
Host species	Rabbit
Applications	WB;IHC
Species Cross-Reactivity	Human; Mouse
Recommended dilutions	WB 1:500-2000;IHC-p 1:50-300
Immunogen	Synthesized peptide derived from human KR161 AA range: 19-69
Specificity	This antibody detects endogenous levels of KR161 at Human/Mouse
Formulation	Liquid in PBS containing 50% glycerol, 0.5% BSA and 0.02% sodium azide.
Storage	Store at -20°C. Avoid repeated freeze-thaw cycles.
Protein Name	KR161
Gene Name	KRTAP16-1 KAP16.1
Cellular localization	keratin filament,
Purification	The antibody was affinity-purified from rabbit antiserum by affinity-chromatography using epitope-specific immunogen.
Clonality	Polyclonal
Concentration	1 mg/ml
Observed band	
Human Gene ID	100505753
Human Swiss-Prot Number	A8MUX0
Alternative Names	
Background	





Western blot analysis of lysates from HEK293 cells,
primary antibody was diluted at 1:1000, 4° over night



Immunohistochemical analysis of paraffin-embedded
human Squamous cell carcinoma of lung. 1, Antibody was
diluted at 1:200(4° overnight). 2, Tris-EDTA,pH9.0 was
used for antigen retrieval. 3,Secondary antibody was
diluted at 1:200(room temperature, 45min).

