

# GDF11 rabbit pAb

Cat No.:ES16219

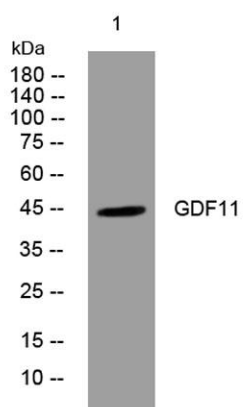
For research use only

## Overview

Product Name	GDF11 rabbit pAb
Host species	Rabbit
Applications	WB
Species Cross-Reactivity	Human; Mouse;Rat
Recommended dilutions	WB 1: 500-2000
Immunogen	Synthesized peptide derived from human GDF11 AA range: 217-267
Specificity	This antibody detects endogenous levels of GDF11 at Human/Mouse/Rat
Formulation	Liquid in PBS containing 50% glycerol, 0.5% BSA and 0.02% sodium azide.
Storage	Store at -20°C. Avoid repeated freeze-thaw cycles.
Protein Name	GDF11
Gene Name	GDF11 BMP11
Cellular localization	Secreted .
Purification	The antibody was affinity-purified from rabbit antiserum by affinity-chromatography using epitope-specific immunogen.
Clonality	Polyclonal
Concentration	1 mg/ml
Observed band	
Human Gene ID	10220
Human Swiss-Prot Number	O95390
Alternative Names	
Background	This gene encodes a secreted ligand of the TGF-beta (transforming growth factor-beta) superfamily of proteins. Ligands of this family bind various TGF-beta receptors leading to recruitment and activation of SMAD family transcription factors that regulate gene expression. The encoded preproprotein is proteolytically processed to generate each subunit of the disulfide-linked homodimer. This protein plays a role in the



development of the nervous and other organ systems, and may regulate aging. [provided by RefSeq, Aug 2016],



Western blot analysis of lysates from A549 cells, primary antibody was diluted at 1:1000, 4°over night

