

IFIX rabbit pAb

Cat No.:ES15528

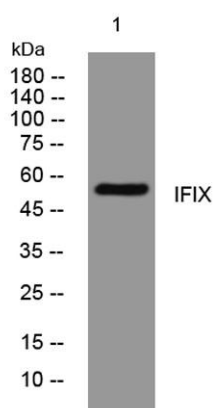
For research use only

Overview

Product Name	IFIX rabbit pAb
Host species	Rabbit
Applications	WB
Species Cross-Reactivity	Human; Mouse
Recommended dilutions	WB 1: 500-2000
Immunogen	Synthesized peptide derived from human IFIX AA range: 338-388
Specificity	This antibody detects endogenous levels of IFIX at Human/Mouse
Formulation	Liquid in PBS containing 50% glycerol, 0.5% BSA and 0.02% sodium azide.
Storage	Store at -20°C. Avoid repeated freeze-thaw cycles.
Protein Name	IFIX
Gene Name	PYHIN1 IFIX
Cellular localization	[Isoform 1]: Nucleus, nucleoplasm.; [Isoform 3]: Nucleus, nucleoplasm.; [Isoform 5]: Nucleus. Nucleus speckle.
Purification	The antibody was affinity-purified from rabbit antiserum by affinity-chromatography using epitope-specific immunogen.
Clonality	Polyclonal
Concentration	1 mg/ml
Observed band	
Human Gene ID	149628
Human Swiss-Prot Number	Q6K0P9
Alternative Names	
Background	The protein encoded by this gene belongs to the HIN-200 family of interferon-inducible proteins that share a 200-amino acid signature motif at their C-termini. HIN200 proteins are primarily nuclear and are involved in transcriptional regulation of genes important for cell cycle control, differentiation, and apoptosis. Downregulation of this gene is associated



with breast cancer. This protein acts as a tumor suppressor by promoting ubiquitination and subsequent degradation of MDM2, which leads to stabilization of p53/TP53. Alternatively spliced transcript variants encoding different isoforms have been described for this gene. [provided by RefSeq, Aug 2011],



Western blot analysis of lysates from 293T cells, primary antibody was diluted at 1:1000, 4°over night