

MYT1L rabbit pAb

Cat No.:ES14580

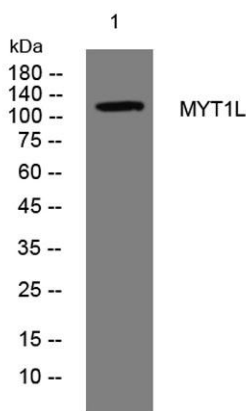
For research use only

Overview

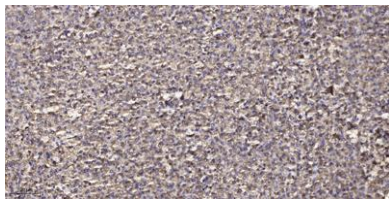
Product Name	MYT1L rabbit pAb
Host species	Rabbit
Applications	WB;ELISA;IHC
Species Cross-Reactivity	Human; Mouse;Rat
Recommended dilutions	WB 1:500-2000;IHC-p 1:50-300; ELISA 2000-20000
Immunogen	Synthesized peptide derived from human MYT1L AA range: 595-645
Specificity	This antibody detects endogenous levels of MYT1L at Human/Mouse/Rat
Formulation	Liquid in PBS containing 50% glycerol, 0.5% BSA and 0.02% sodium azide.
Storage	Store at -20°C. Avoid repeated freeze-thaw cycles.
Protein Name	MYT1L
Gene Name	MYT1L KIAA1106
Cellular localization	Nucleus . Chromosome . Preferentially binds to DNA binding sites that are in an open chromatin configuration. .
Purification	The antibody was affinity-purified from rabbit antiserum by affinity-chromatography using epitope-specific immunogen.
Clonality	Polyclonal
Concentration	1 mg/ml
Observed band	
Human Gene ID	23040
Human Swiss-Prot Number	Q9UL68
Alternative Names	
Background	This gene encodes a member of the zinc finger superfamily of transcription factors. The encoded protein belongs to a novel class of cysteine-cysteine-histidine-cysteine zinc finger proteins that function in the developing mammalian central nervous system. Forced expression of this gene in combination with the basic helix-loop-helix



transcription factor NeuroD1 and the transcription factors POU class 3 homeobox 2 and achaete-scute family basic helix-loop-helix transcription factor 1 can convert fetal and postnatal human fibroblasts into induced neuronal cells, which are able to generate action potentials. Mutations in this gene have been associated with autosomal mental retardation-39 and autism spectrum disorder. Alternative splicing results in multiple variants. [provided by RefSeq, Aug 2016],



Western blot analysis of lysates from A431 cells, primary antibody was diluted at 1:1000, 4° over night



Immunohistochemical analysis of paraffin-embedded human liver cancer. 1, Antibody was diluted at 1:200(4° overnight). 2, Tris-EDTA, pH9.0 was used for antigen retrieval. 3, Secondary antibody was diluted at 1:200(room temperature, 45min).

