



# RHBT2 rabbit pAb

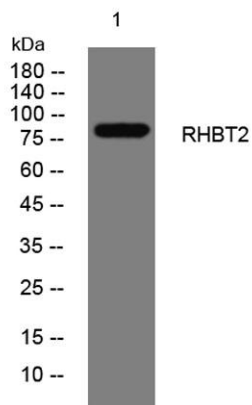
Cat No.:ES13403

For research use only

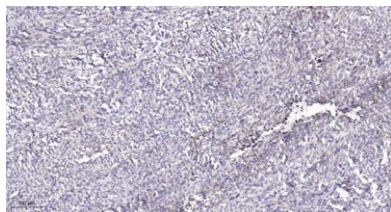
## Overview

Product Name	RHBT2 rabbit pAb
Host species	Rabbit
Applications	WB;ELISA;IHC
Species Cross-Reactivity	Human; Mouse
Recommended dilutions	WB 1:500-2000;IHC-p 1:50-300; ELISA 2000-20000
Immunogen	Synthesized peptide derived from human RHBT2 AA range: 573-623
Specificity	This antibody detects endogenous levels of RHBT2 at Human/Mouse
Formulation	Liquid in PBS containing 50% glycerol, 0.5% BSA and 0.02% sodium azide.
Storage	Store at -20°C. Avoid repeated freeze-thaw cycles.
Protein Name	RHBT2
Gene Name	RHOBTB2 DBC2 KIAA0717
Cellular localization	intracellular,cytosol,plasma membrane,
Purification	The antibody was affinity-purified from rabbit antiserum by affinity-chromatography using epitope-specific immunogen.
Clonality	Polyclonal
Concentration	1 mg/ml
Observed band	
Human Gene ID	23221
Human Swiss-Prot Number	Q9BYZ6
Alternative Names	
Background	The protein encoded by this gene is a small Rho GTPase and a candidate tumor suppressor. The encoded protein interacts with the cullin-3 protein, a ubiquitin E3 ligase necessary for mitotic cell division. This protein inhibits the growth and spread of some types of breast cancer. Three transcript variants encoding different isoforms have been found for this gene. [provided by RefSeq, Nov 2011],





Western blot analysis of lysates from DU145 cells, primary antibody was diluted at 1:1000, 4° over night



Immunohistochemical analysis of paraffin-embedded human Colon cancer. 1, Antibody was diluted at 1:200(4° overnight). 2, Tris-EDTA, pH9.0 was used for antigen retrieval. 3, Secondary antibody was diluted at 1:200(room temperature, 45min).

